



Certified Minority Woman Owned DBE, EDWOSB,
 WOSB, MN-TG/ED, CERT, MNUCP, Section 3
 23549 Cedar Creek Road * Pine City, MN 55063 *
 Phone: (612)900-4026 * Fax:(651)964-2371
 E-mail: CBloom@B2GSALESLLC.COM

PANASONIC



2023 CATALOG

Item	Description	BRAND	B2G SALES LIST PRICE as of 8/1/2023	CLIENT DISCOUNT	CLIENT PRICE EACH	
NVR-DT-12TB-V3	I-PRO ST2, SINGLE XEON HEX CORE CPU, 16GB RAM, WINDOWS 10 PRO.OS ON M.2 SSD, TOTAL STORAGE 12TB (RAID 5), USABLE 8TB, NVIDIA GT1030, KEYBOARD MOUSE.NO RAILS, NO OPTICAL DRIVE.3 YEAR PRO-LIMITEDHARDWAREWARRANTY WITHON-SIGHT SERVICE.	PANASONIC	\$6,960.53	42%	\$4,037.11	NEW
NVR-DT-24TB-V3	I-PRO ST2, SINGLE XEON HEX CORE CPU, 16GB RAM, WINDOWS 10 PRO.OS ON M.2 SSD, TOTAL STORAGE 24TB (RAID 5), USABLE 16TB, NVIDIA GT1030, KEYBOARD MOUSE.NO RAILS, NO OPTICAL DRIVE.3 YEAR PRO-LIMITEDHARDWAREWARRANTY WITHON-SIGHT SERVICE.	PANASONIC	\$7,814.68	42%	\$4,532.51	NEW
NVR-DT-36TB-V3	I-PRO ST2, SINGLE XEON HEX CORE CPU, 16GB RAM, WINDOWS 10 PRO.OS ON 1TB HDD, TOTAL STORAGE 36TB (RAID 5), USABLE 24TB, NVIDIA GT1030, KEYBOARD MOUSE.NO RAILS, NO OPTICAL DRIVE.3 YEAR PRO-LIMITEDHARDWAREWARRANTY WITHON-SIGHT SERVICE.	PANASONIC	\$8,796.20	42%	\$5,101.79	NEW
NVR-DT-48TB-V3	I-PRO ST2, SINGLE XEON HEX CORE CPU, 16GB RAM, WINDOWS 10 PRO.OS ON M.2 SSD, TOTAL STORAGE 48TB (RAID 5), USABLE 32TB, NVIDIA GT1030, KEYBOARD MOUSE.NO RAILS, NO OPTICAL DRIVE.3 YEAR PRO-LIMITEDHARDWAREWARRANTY WITHON-SIGHT SERVICE.	PANASONIC	\$10,032.46	42%	\$5,818.83	NEW
NVR-DT-64TB-V3	I-PRO ST2, SINGLE XEON HEX CORE CPU, 16GB RAM, WINDOWS 10 PRO.OS ON M.2 SSD, TOTAL STORAGE 64TB (RAID 5), USABLE 48TB, NVIDIA GT1030, KEYBOARD MOUSE.NO RAILS, NO OPTICAL DRIVE.3 YEAR PRO-LIMITEDHARDWAREWARRANTY WITHON-SIGHT SERVICE.	PANASONIC	\$11,913.08	42%	\$6,909.58	NEW
NVR-DT-6TB-V3	I-PRO ST2, SINGLE XEON 6 CORE CPU, 16GB RAM, WINDOWS 10 PRO.OS ON M.2 SSD, TOTAL STORAGE 6TB (RAID 5), USABLE 4TB, NVIDIA GT1030, KEYBOARD MOUSE.NO RAILS, NO OPTICAL DRIVE.3 YEAR PRO-LIMITEDHARDWAREWARRANTY WITHON-SIGHT SERVICE.	PANASONIC	\$6,660.83	42%	\$3,863.28	NEW
NVR-R-2-224TB-V3	I-PRO SR3E-C, DUAL XEON SILVER 8 CORE, 16 THREAD CPU, 32GB RAM, WINDOWS SERVER 2019 STANDARD OS INSTALLED ON 2X M.2 SSD IN RAID1 CONFIGURATION - STORAGE: 14 X 16TB ENTERPRISE HDD DRIVES IN RAID 5 CONFIGURATION: RAW STORAGE 224TB, USABLE RAIDED STORAGE 208TB. UNIT INCLUDES, KEYBOARD, MOUSE, RACK RAILS, VI ENTERPRISE SERVER LICENSE PRE-CONFIGURED IN HOUSE, 3-YEAR LIMITED HARDWARE WARRANTY WITH ON-SIGHT SERVICE, DUAL 1GB NIC-BASE-T DUAL 10GB NIC- SFP+. NO OPTICAL DRIVE. (SPECIAL ORDER ITEM ALLOW 14BUSINESS DAYS FOR DELIVERY)	PANASONIC	\$61,431.01	42%	\$35,629.98	NEW
NVR-R-2-256TB-V3	I-PRO SR3E-C, DUAL XEON SILVER 8 CORE, 16 THREAD CPU, 32GB RAM, WINDOWS SERVER 2019 STANDARD OS INSTALLED ON 2X M.2 SSD IN RAID1 CONFIGURATION - STORAGE: 14 X 16TB ENTERPRISE HDD DRIVES IN RAID 5 CONFIGURATION: RAW STORAGE 224TB, USABLE RAIDED STORAGE 208TB. UNIT INCLUDES, KEYBOARD, MOUSE, RACK RAILS, VI ENTERPRISE SERVER LICENSE PRE-CONFIGURED IN HOUSE, 3-YEAR LIMITED HARDWARE WARRANTY WITH ON-SIGHT SERVICE, DUAL 1GB NIC-BASE-T DUAL 10GB NIC- SFP+. NO OPTICAL DRIVE. (SPECIAL ORDER ITEM ALLOW 14BUSINESS DAYS FOR DELIVERY)	PANASONIC	\$64,428.01	42%	\$37,368.24	NEW
NVR-R-2-288TB-V3	I-PRO SR3E-XD, DUAL XEON SILVER 8 CORE, 16 THREAD CPU, 64GB RAM, WINDOWS SERVER 2019 STANDARD OS INSTALLED ON 2x M.2 SSD IN RAID1 CONFIGURATION - STORAGE: 24x 12TB ENTERPRISE HDD DRIVES IN RAID 6 CONFIGURATION: RAW STORAGE 288TB, USABLE RAIDED STORAGE 264TB. UNIT INCLUDES, KEYBOARD, MOUSE, RACK RAILS, VI ENTERPRISE SERVER LICENSE PRE-CONFIGURED IN HOUSE, 3-YEAR LIMITED HARDWARE WARRANTY WITH ON-SIGHT SERVICE, DUAL 1GB NIC- BASE-T and DUAL 10GB NIC- SFP+. NO OPTICAL DRIVE. (SPECIAL ORDER ITEM ALLOW 14BUSINESS DAYS FOR DELIVERY)	PANASONIC	\$70,422.01	42%	\$40,844.76	NEW
NVR-R-2-336TB-V3	I-PRO SR3E-XD, DUAL XEON SILVER 8 CORE, 16 THREAD CPU, 64GB RAM, WINDOWS SERVER 2019 STANDARD OS INSTALLED ON 2X SSD IN RAID1 CONFIGURATION - STORAGE: 24X 16TB ENTERPRISE HDD DRIVES IN RAID 6 CONFIGURATION: RAW STORAGE 384TB, USABLE RAIDED STORAGE 352TB. UNIT INCLUDES, KEYBOARD, MOUSE, RACK RAILS, VI ENTERPRISE SERVER LICENSE PRE-CONFIGURED IN HOUSE, 3-YEAR LIMITED HARDWARE WARRANTY WITH ON-SIGHT SERVICE, DUAL 1GB NIC-BASE-T DUAL 10GB NIC- SFP+. NO OPTICAL DRIVE.(SPECIAL ORDER ITEM ALLOW 14BUSINESS DAYS FOR DELIVERY)	PANASONIC	\$77,464.96	42%	\$44,929.68	NEW
NVR-R-2-384TB-V3	I-PRO SR3E-XD, DUAL XEON SILVER 8 CORE, 16 THREAD CPU, 64GB RAM, WINDOWS SERVER 2019 STANDARD OS INSTALLED ON 2x SSD IN RAID1 CONFIGURATION - STORAGE: 24x 16TB ENTERPRISE HDD DRIVES IN RAID 6 CONFIGURATION: RAW STORAGE 384TB, USABLE RAIDED STORAGE 352TB. UNIT INCLUDES, KEYBOARD, MOUSE, RACK RAILS, VI ENTERPRISE SERVER LICENSE PRE-CONFIGURED IN HOUSE, 3-YEAR LIMITED HARDWARE WARRANTY WITH ON-SIGHT SERVICE, DUAL 1GB NIC- BASE-T and DUAL 10GB NIC- SFP+. NO OPTICAL DRIVE.(SPECIAL ORDER ITEM ALLOW 14BUSINESS DAYS FOR DELIVERY)	PANASONIC	\$85,407.01	42%	\$49,536.06	NEW
NVR-R-2-432TB-V3	I-PRO SR3E-XD, DUAL XEON SILVER 8 CORE, 16 THREAD CPU, 64GB RAM, WINDOWS SERVER 2019 STANDARD OS INSTALLED ON 2x SSD IN RAID1 CONFIGURATION - STORAGE: 24x 18TB ENTERPRISE HDD DRIVES IN RAID 6 CONFIGURATION: RAW STORAGE 432TB, USABLE RAIDED STORAGE 396TB. UNIT INCLUDES, KEYBOARD, MOUSE, RACK RAILS, VI ENTERPRISE SERVER LICENSE PRE-CONFIGURED IN HOUSE, 3-YEAR LIMITED HARDWARE WARRANTY WITH ON-SIGHT SERVICE, DUAL 1GB NIC- BASE-T and DUAL 10GB NIC- SFP+. NO OPTICAL DRIVE. (SPECIAL ORDER ITEM ALLOW 14BUSINESS DAYS FOR DELIVERY)	PANASONIC	\$98,893.51	42%	\$57,358.23	NEW



Certified Minority Woman Owned DBE, EDWOSB,
 WOSB, MN-TG/ED, CERT, MNUCP, Section 3
 23549 Cedar Creek Road * Pine City, MN 55063 *
 Phone: (612)900-4026 * Fax:(651)964-2371
 E-mail: CBloom@B2GSALESLLC.COM

PANASONIC



2023 CATALOG

Item	Description	BRAND	B2G SALES LIST PRICE as of 8/1/2023	CLIENT DISCOUNT	CLIENT PRICE EACH	
NVR-R-2-96TB-V3A	SPECIAL ORDER UNIT- I-PRO SR2E, DUAL XEON SILVER 8 CORE, 16 THREAD CPU, 64GB RAM, WINDOWS SERVER 2019 STANDARD OS INSTALLED ON 2X M.2 SSD IN RAID1 CONFIGURATION, PERC755 - STORAGE 8X 12TB SAS ENTERPRISE HDD DRIVES IN RAID5 CONFIGURATION: RAW STORAGE 96TB, USABLE RAIDED STORAGE 84TB. UNIT INCLUDES, KEYBOARD, MOUSE, RACK RAILS, VI ENTERPRISE SERVER LICENSE PRE-CONFIGURED IN HOUSE, 7-YEAR LIMITED HARDWARE WARRANTY WITH ON-SITE SERVICE, QUAD 1GB NIC-BASE-T, I-DRAC ENTERPRISE	PANASONIC	\$28,096.88	42%	\$16,296.19	NEW
NVR-RL-1-12TB-V3	I-PRO SRL1, SINGLE XEON 6 CORE CPU, 16GB RAM, WINDOWS 10 PRO OS INSTALLED ON 1X M.2 SSD - STORAGE ON 1 X 12TB ENTERPRIS HDD DRIVE (NO RAID). UNIT INCLUDES, KEYBOARD, MOUSE, RACK RAILS, VI ENTERPRISE SERVER LICENSE PRE-CONFIGURED IN HOUSE, 3-YEAR LIMITED HARDWARE WARRANTY WITH ON-SIGHT SERVICE.DUAL 1GB NIC-BASE-T. NO OPTICAL DRIVE.	PANASONIC	\$5,986.51	42%	\$3,472.17	NEW
NVR-RL-1-16TB-V3	I-PRO SRL1, SINGLE XEON 6 CORE CPU, 16GB RAM, WINDOWS 10 PRO OS INSTALLED ON 1X M.2 SSD - STORAGE ON 1 X 16TB ENTERPRIS HDD DRIVE (NO RAID). UNIT INCLUDES, KEYBOARD, MOUSE, RACK RAILS, VI ENTERPRISE SERVER LICENSE PRE-CONFIGURED IN HOUSE, 3-YEAR LIMITED HARDWARE WARRANTY WITH ON-SIGHT SERVICE.DUAL 1GB NIC-BASE-T. NO OPTICAL DRIVE.	PANASONIC	\$6,705.79	42%	\$3,889.36	NEW
NVR-RL-1-24TB-V3	I-PRO SRL1XL, SINGLE XEON 6 CORE CPU, 16GB RAM, WINDOWS 10 PRO OS INSTALLED ON 1X M.2 SSD - STORAGE: 3 X 8TB ENTERPRISE HDD DRIVES IN RAID 5 CONFIGURATION: RAW STORAGE 24TB, USABLE RAIDED STORAGE 16TB. UNIT INCLUDES, KEYBOARD, MOUSE, RACK RAILS, VI ENTERPRISE SERVER LICENSE PRE-CONFIGURED IN HOUSE, 3-YEAR LIMITED HARDWARE WARRANTY WITH ON-SIGHT SERVICE. DUAL 1GB NIC-BASE-T. NO OPTICAL DRIVE.	PANASONIC	\$8,803.69	42%	\$5,106.14	NEW
NVR-RL-1-36TB-V3	I-PRO SRL1XL, SINGLE XEON 6 CORE CPU, 16GB RAM, WINDOWS 10 PRO OS INSTALLED ON 1X M.2 SSD - STORAGE: 3 X 12TB ENTERPRISE HDD DRIVES IN RAID 5 CONFIGURATION: RAW STORAGE 36TB, USABLE RAIDED STORAGE 24TB. UNIT INCLUDES, KEYBOARD, MOUSE, RACK RAILS, VI ENTERPRISE SERVER LICENSE PRE-CONFIGURED IN HOUSE, 3-YEAR LIMITED HARDWARE WARRANTY WITH ON-SIGHT SERVICE.DUAL 1GB NIC-BASE-T. NO OPTICAL DRIVE.	PANASONIC	\$10,125.36	42%	\$5,872.71	NEW
NVR-RL-1-48TB-V3	I-PRO SRL1XL, SINGLE XEON 6 CORE CPU, 16GB RAM, WINDOWS 10 PRO OS INSTALLED ON 1X M.2 SSD - STORAGE: 3 X 16TB ENTERPRISE HDD DRIVES IN RAID 5 CONFIGURATION: RAW STORAGE 48TB, USABLE RAIDED STORAGE 36TB. UNIT INCLUDES, KEYBOARD, MOUSE, RACK RAILS, VI ENTERPRISE SERVER LICENSE PRE-CONFIGURED IN HOUSE, 3-YEAR LIMITED HARDWARE WARRANTY WITH ON-SIGHT SERVICE.DUAL 1GB NIC-BASE-T. NO OPTICAL DRIVE.	PANASONIC	\$11,650.84	42%	\$6,757.49	NEW
NVR-RL-1-4TB-V3	I-PRO SRL1, SINGLE XEON 6 CORE CPU, 16GB RAM, WINDOWS 10 PRO OS INSTALLED ON 1X M.2 SSD - STORAGE ON 1 X 4TB ENTERPRIS HDD DRIVE (NO RAID). UNIT INCLUDES, KEYBOARD, MOUSE, RACK RAILS, VI ENTERPRISE SERVER LICENSE PRE-CONFIGURED IN HOUSE, 3-YEAR LIMITED HARDWARE WARRANTY WITH ON-SIGHT SERVICE.DUAL 1GB NIC-BASE-T. NO OPTICAL DRIVE.	PANASONIC	\$5,237.26	42%	\$3,037.61	NEW
NVR-RL-1-60TB-V3	I-PRO SRL2, SINGLE XEON SILVER 8 CORE, 16 THREAD CPU, 16GB RAM, WINDOWS SERVER 2019 STANDARD OS INSTALLED ON 2X M.2 SSD IN RAID1 CONFIGURATION - STORAGE: 5 X 12TB ENTERPRISE HDD DRIVES IN RAID 5 CONFIGURATION: RAW STORAGE 60TB, USABLE RAIDED STORAGE 48TB. UNIT INCLUDES, KEYBOARD, MOUSE, RACK RAILS, VI ENTERPRISE SERVER LICENSE PRE-CONFIGURED IN HOUSE, 3-YEAR LIMITED HARDWARE WARRANTY WITH ON-SIGHT SERVICE.QUAD 1GB NIC-BASE-T. NO OPTICAL DRIVE.	PANASONIC	\$20,671.81	42%	\$11,989.65	NEW
NVR-RL-1-72TB-V3	I-PRO SRL2, SINGLE XEON SILVER 8 CORE, 16 THREAD CPU, 16GB RAM, WINDOWS SERVER 2019 STANDARD OS INSTALLED ON 2X M.2 SSD IN RAID1 CONFIGURATION - STORAGE: 6 X 12TB ENTERPRISE HDD DRIVES IN RAID 5 CONFIGURATION: RAW STORAGE 72TB, USABLE RAIDED STORAGE 60TB. UNIT INCLUDES, KEYBOARD, MOUSE, RACK RAILS, VI ENTERPRISE SERVER LICENSE PRE-CONFIGURED IN HOUSE, 3-YEAR LIMITED HARDWARE WARRANTY WITH ON-SIGHT SERVICE.QUAD 1GB NIC-BASE-T NO OPTICAL DRIVE.	PANASONIC	\$22,020.46	42%	\$12,771.87	NEW
NVR-RL-1-84TB-V3	I-PRO SRL2, SINGLE XEON SILVER 8 CORE, 16 THREAD CPU, 16GB RAM, WINDOWS SERVER 2019 STANDARD OS INSTALLED ON 2X M.2 SSD IN RAID1 CONFIGURATION - STORAGE: 7 X 12TB ENTERPRISE HDD DRIVES IN RAID 5 CONFIGURATION: RAW STORAGE 84TB, USABLE RAIDED STORAGE 60TB. UNIT INCLUDES, KEYBOARD, MOUSE, RACK RAILS, VI ENTERPRISE SERVER LICENSE PRE-CONFIGURED IN HOUSE, 3-YEAR LIMITED HARDWARE WARRANTY WITH ON-SIGHT SERVICE. DUAL 1GB NIC-BASE-T NO OPTICAL DRIVE.	PANASONIC	\$23,219.26	42%	\$13,467.17	NEW
NVR-RL-1-8TB-V3	I-PRO SRL1, SINGLE XEON 6 CORE CPU, 16GB RAM, WINDOWS 10 PRO OS INSTALLED ON 1X M.2 SSD - STORAGE ON 1 X 8TB ENTERPRIS HDD DRIVE (NO RAID). UNIT INCLUDES, KEYBOARD, MOUSE, RACK RAILS, VI ENTERPRISE SERVER LICENSE PRE-CONFIGURED IN HOUSE, 3-YEAR LIMITED HARDWARE WARRANTY WITH ON-SIGHT SERVICE.DUAL 1GB NIC-BASE-T. NO OPTICAL DRIVE.	PANASONIC	\$5,469.53	42%	\$3,172.32	NEW
NVR-RL-2-112TB-V3	I-PRO SRL2E, DUAL XEON SILVER 8 CORE, 16 THREAD CPU, 32GB RAM, WINDOWS SERVER 2019 STANDARD OS INSTALLED ON 2X M.2 SSD IN RAID1 CONFIGURATION - STORAGE: 7 X 16TB ENTERPRISE HDD DRIVES IN RAID 5 CONFIGURATION: RAW STORAGE 112TB, USABLE RAIDED STORAGE 96TB. UNIT INCLUDES, KEYBOARD, MOUSE, RACK RAILS, VI ENTERPRISE SERVER LICENSE PRE-CONFIGURED IN HOUSE, 3-YEAR LIMITED HARDWARE WARRANTY WITH ON-SIGHT SERVICE, DUAL 1GB NIC-BASE-T DUAL 10GB NIC- SFP+. NO OPTICAL DRIVE.	PANASONIC	\$34,278.19	42%	\$19,881.35	NEW



Certified Minority Woman Owned DBE, EDWOSB,
 WOSB, MN-TG/ED, CERT, MNUCP, Section 3
 23549 Cedar Creek Road * Pine City, MN 55063 *
 Phone: (612)900-4026 * Fax:(651)964-2371
 E-mail: CBloom@B2GSALESLLC.COM

PANASONIC



2023 CATALOG

Item	Description	BRAND	B2G SALES LIST PRICE as of 8/1/2023	CLIENT DISCOUNT	CLIENT PRICE EACH	
NVR-RL-2-128TB-V3	I-PRO SRL2E, DUAL XEON SILVER 8 CORE, 16 THREAD CPU, 32GB RAM, WINDOWS SERVER 2019 STANDARD OS INSTALLED ON 2X M.2 SSD IN RAID1 CONFIGURATION - STORAGE: 8 X 16TB ENTERPRISE HDD DRIVES IN RAID 5 CONFIGURATION: RAW STORAGE 128TB, USABLE RAIDED STORAGE 112TB. UNIT INCLUDES, KEYBOARD, MOUSE, RACK RAILS, VI ENTERPRISE SERVER LICENSE PRE-CONFIGURED IN HOUSE, 3-YEAR LIMITED HARDWARE WARRANTY WITH ON-SIGHT SERVICE, DUAL 1GB NIC-BASE-T DUAL 10GB NIC- SFP+. NO OPTICAL DRIVE.	PANASONIC	\$36,525.94	42%	\$21,185.04	NEW
NVR-RL-2-144TB-V3	I-PRO SRL3E, DUAL XEON SILVER 8 CORE, 16 THREAD CPU, 32GB RAM, WINDOWS SERVER 2019 STANDARD OS INSTALLED ON 2X M.2 SSD IN RAID1 CONFIGURATION - STORAGE: 9 X 16TB ENTERPRISE HDD DRIVES IN RAID 5 CONFIGURATION: RAW STORAGE 144TB, USABLE RAIDED STORAGE 138TB. UNIT INCLUDES, KEYBOARD, MOUSE, RACK RAILS, VI ENTERPRISE SERVER LICENSE PRE-CONFIGURED IN HOUSE, 3-YEAR LIMITED HARDWARE WARRANTY WITH ON-SIGHT SERVICE, DUAL 1GB NIC-BASE-T DUAL 10GB NIC- SFP+. NO OPTICAL DRIVE.	PANASONIC	\$41,770.69	42%	\$24,227.00	NEW
NVR-RL-2-176TB-V3	I-PRO SRL3E, DUAL XEON SILVER 8 CORE, 16 THREAD CPU, 32GB RAM, WINDOWS SERVER 2019 STANDARD OS INSTALLED ON 2X M.2 SSD IN RAID1 CONFIGURATION - STORAGE: 11 X 16TB ENTERPRISE HDD DRIVES IN RAID 5 CONFIGURATION: RAW STORAGE 176TB, USABLE RAIDED STORAGE 160TB. UNIT INCLUDES, KEYBOARD, MOUSE, RACK RAILS, VI ENTERPRISE SERVER LICENSE PRE-CONFIGURED IN HOUSE, 3-YEAR LIMITED HARDWARE WARRANTY WITH ON-SIGHT SERVICE, DUAL 1GB NIC-BASE-T DUAL 10GB NIC- SFP+. NO OPTICAL DRIVE.	PANASONIC	\$47,914.54	42%	\$27,790.43	NEW
NVR-RL-2-192TB-V3	I-PRO SRL3E, DUAL XEON SILVER 8 CORE, 16 THREAD CPU, 32GB RAM, WINDOWS SERVER 2019 STANDARD OS INSTALLED ON 2X M.2 SSD IN RAID1 CONFIGURATION - STORAGE: 12 X 16TB ENTERPRISE HDD DRIVES IN RAID 5 CONFIGURATION: RAW STORAGE 192TB, USABLE RAIDED STORAGE 176TB. UNIT INCLUDES, KEYBOARD, MOUSE, RACK RAILS, VI ENTERPRISE SERVER LICENSE PRE-CONFIGURED IN HOUSE, 3-YEAR LIMITED HARDWARE WARRANTY WITH ON-SIGHT SERVICE, DUAL 1GB NIC-BASE-T DUAL 10GB NIC- SFP+. NO OPTICAL DRIVE. (SPECIAL ORDER ITEM ALLOW 14BUSINESS DAYS FOR DELIVERY)	PANASONIC	\$51,436.01	42%	\$29,832.89	NEW
NVR-RL-2-32TB-V3	I-PRO SRL2E, DUAL XEON SILVER 8 CORE, 16 THREAD CPU, 32GB RAM, WINDOWS SERVER 2019 STANDARD OS INSTALLED ON 2x M.2 SSD IN RAID1 CONFIGURATION - STORAGE: 4 x 8TB ENTERPRISE HDD DRIVES IN RAID 5 CONFIGURATION: RAW STORAGE 32TB, USABLE RAIDED STORAGE 24TB. UNIT INCLUDES, KEYBOARD, MOUSE, RACK RAILS, VI ENTERPRISE SERVER LICENSE PRE-CONFIGURED IN HOUSE, 3-YEAR LIMITED HARDWARE WARRANTY WITH ON-SIGHT SERVICE, DUAL 1GB NIC- BASE-T and DUAL 10GB NIC- SFP+. NO OPTICAL	PANASONIC	\$19,473.01	42%	\$11,294.34	NEW
NVR-RL-2-48TB-V3	I-PRO SRL2E, DUAL XEON SILVER 8 CORE, 16 THREAD CPU, 32GB RAM, WINDOWS SERVER 2019 STANDARD OS INSTALLED ON 2X M.2 SSD IN RAID1 CONFIGURATION - STORAGE: 6 X 8TB ENTERPRISE HDD DRIVES IN RAID 5 CONFIGURATION: RAW STORAGE 48TB, USABLE RAIDED STORAGE 40TB. UNIT INCLUDES, KEYBOARD, MOUSE, RACK RAILS, VI ENTERPRISE SERVER LICENSE PRE-CONFIGURED IN HOUSE, 3-YEAR LIMITED HARDWARE WARRANTY WITH ON-SIGHT SERVICE, DUAL 1GB NIC-BASE-T DUAL 10GB NIC- SFP+. NO OPTICAL DRIVE.	PANASONIC	\$21,421.06	42%	\$12,424.21	NEW
NVR-RL-2-60TB-V3	I-PRO SRL2E, DUAL XEON SILVER 8 CORE, 16 THREAD CPU, 32GB RAM, WINDOWS SERVER 2019 STANDARD OS INSTALLED ON 2X M.2 SSD IN RAID1 CONFIGURATION - STORAGE: 5 X 12TB ENTERPRISE HDD DRIVES IN RAID 5 CONFIGURATION: RAW STORAGE 60TB, USABLE RAIDED STORAGE 48TB. UNIT INCLUDES, KEYBOARD, MOUSE, RACK RAILS, VI ENTERPRISE SERVER LICENSE PRE-CONFIGURED IN HOUSE, 3-YEAR LIMITED HARDWARE WARRANTY WITH ON-SIGHT SERVICE, DUAL 1GB NIC-BASE-T DUAL 10GB NIC- SFP+. NO OPTICAL DRIVE.	PANASONIC	\$22,889.59	42%	\$13,275.96	NEW
NVR-RL-2-72TB-V3	I-PRO SRL2E, DUAL XEON SILVER 8 CORE, 16 THREAD CPU, 32GB RAM, WINDOWS SERVER 2019 STANDARD OS INSTALLED ON 2X M.2 SSD IN RAID1 CONFIGURATION - STORAGE: 6 X 12TB ENTERPRISE HDD DRIVES IN RAID 5 CONFIGURATION: RAW STORAGE 72TB, USABLE RAIDED STORAGE 60TB. UNIT INCLUDES, KEYBOARD, MOUSE, RACK RAILS, VI ENTERPRISE SERVER LICENSE PRE-CONFIGURED IN HOUSE, 3-YEAR LIMITED HARDWARE WARRANTY WITH ON-SIGHT SERVICE, DUAL 1GB NIC-BASE-T DUAL 10GB NIC- SFP+. NO OPTICAL DRIVE.	PANASONIC	\$25,437.04	42%	\$14,753.48	NEW
NVR-RL-2-84TB-V3	I-PRO SRL2E, DUAL XEON SILVER 8 CORE, 16 THREAD CPU, 32GB RAM, WINDOWS SERVER 2019 STANDARD OS INSTALLED ON 2X M.2 SSD IN RAID1 CONFIGURATION - STORAGE: 7 X 12TB ENTERPRISE HDD DRIVES IN RAID 5 CONFIGURATION: RAW STORAGE 84TB, USABLE RAIDED STORAGE 72TB. UNIT INCLUDES, KEYBOARD, MOUSE, RACK RAILS, VI ENTERPRISE SERVER LICENSE PRE-CONFIGURED IN HOUSE, 3-YEAR LIMITED HARDWARE WARRANTY WITH ON-SIGHT SERVICE, DUAL 1GB NIC-BASE-T DUAL 10GB NIC- SFP+. NO OPTICAL DRIVE.	PANASONIC	\$26,935.54	42%	\$15,622.61	NEW
NVR-RL-2-96TB-V3	I-PRO SRL2E, DUAL XEON SILVER 8 CORE, 16 THREAD CPU, 32GB RAM, WINDOWS SERVER 2019 STANDARD OS INSTALLED ON 2X M.2 SSD IN RAID1 CONFIGURATION - STORAGE: 8 X 12TB ENTERPRISE HDD DRIVES IN RAID 5 CONFIGURATION: RAW STORAGE 96TB, USABLE RAIDED STORAGE 84TB. UNIT INCLUDES, KEYBOARD, MOUSE, RACK RAILS, VI ENTERPRISE SERVER LICENSE PRE-CONFIGURED IN HOUSE, 3-YEAR LIMITED HARDWARE WARRANTY WITH ON-SIGHT SERVICE, DUAL 1GB NIC-BASE-T DUAL 10GB NIC- SFP+. NO OPTICAL DRIVE.	PANASONIC	\$29,782.69	42%	\$17,273.96	NEW



Certified Minority Woman Owned DBE, EDWOSB,
 WOSB, MN-TG/ED, CERT, MNUCP, Section 3
 23549 Cedar Creek Road * Pine City, MN 55063 *
 Phone: (612)900-4026 * Fax: (651)964-2371
 E-mail: CBloom@B2GSALESLLC.COM

PANASONIC



2023 CATALOG

Item	Description	BRAND	B2G SALES LIST PRICE as of 8/1/2023	CLIENT DISCOUNT	CLIENT PRICE EACH	
NVR-RLR-1-24TB-V3	I-PRO SRL2, SINGLE XEON SILVER 8 CORE, 16 THREAD CPU, 16GB RAM, WINDOWS SERVER 2019 STANDARD OS INSTALLED ON 2X M.2 SSD IN RAID1 CONFIGURATION - STORAGE: 3 X 8TB ENTERPRISE HDD DRIVES IN RAID 5 CONFIGURATION: RAW STORAGE 24TB, USABLE RAIDED STORAGE 16TB. UNIT INCLUDES, KEYBOARD, MOUSE, RACK RAILS, VI ENTERPRISE SERVER LICENSE PRE-CONFIGURED IN HOUSE, 3-YEAR LIMITED HARDWARE WARRANTY WITH ON-SIGHT SERVICE.QUAD 1GB NIC-BASE-T. NO OPTICAL DRIVE.	PANASONIC	\$15,317.67	42%	\$8,884.25	NEW
NVR-RLR-1-48TB-V3	I-PRO SRL2, SINGLE XEON SILVER 8 CORE, 16 THREAD CPU, 16GB RAM, WINDOWS SERVER 2019 STANDARD OS INSTALLED ON 2X M.2 SSD IN RAID1 CONFIGURATION - STORAGE: 6 X 8TB ENTERPRISE HDD DRIVES IN RAID 5 CONFIGURATION: RAW STORAGE 48TB, USABLE RAIDED STORAGE 40TB. UNIT INCLUDES, KEYBOARD, MOUSE, RACK RAILS, VI ENTERPRISE SERVER LICENSE PRE-CONFIGURED IN HOUSE, 3-YEAR LIMITED HARDWARE WARRANTY WITH ON-SIGHT SERVICE.QUAD 1GB NIC-BASE-T. NO OPTICAL DRIVE.	PANASONIC	\$17,996.99	42%	\$10,438.25	NEW
NVR-RW-1-2TB-V3	I-PRO WR1-A, SINGLE 8 CORE CPU, 32GB RAM, RTX4000 GPU(4 DP OUTPUTS) WINDOWS 10 PRO OS INSTALLED ON 1X M.2 SSD - STORAGE ON 1 X 2TB ENTERPRIS HDD DRIVE (NO RAID). UNIT INCLUDES, KEYBOARD, MOUSE, RACK RAILS, VI MONITORPLUS VIEWING CLIENT PRE-CONFIGURED IN HOUSE, 3-YEAR LIMITED HARDWARE WARRANTY WITH ON-SIGHT SERVICE,DUAL 1GB NIC-BASE-T. NO OPTICAL DRIVE.	PANASONIC	\$8,241.75	42%	\$4,780.22	NEW
NVR-SF-1-16TB-V3	I-PRO SF-1, SINGLE INTEL 10TH GEN 4C/4T CPU, 8GB RAM, WINDOWS 10 PRO.OS ON M.2: STORAGE 16TB HDD, KEYBOARD MOUSE.NO RAILS, NO OPTICAL DRIVE, NO LICENSING 3 YEAR HARDWAREWARRANTY +I-PRO SUPPORT.	PANASONIC	\$4,308.19	42%	\$2,498.75	NEW
NVR-SF-1-4TB-V3	I-PRO SF-1, SINGLE INTEL 10TH GEN 4C/4T CPU, 8GB RAM, WINDOWS 10 PRO.OS ON M.2: STORAGE 4TB HDD, KEYBOARD MOUSE.NO RAILS, NO OPTICAL DRIVE, NO LICENSING 3 YEAR HARDWAREWARRANTY +I-PRO SUPPORT.	PANASONIC	\$2,772.23	42%	\$1,607.89	NEW
NVR-SF-1-8TB-V3	I-PRO SF-1, SINGLE INTEL 10TH GEN 10TH GEN 4C/4T CPU, 8GB RAM, WINDOWS 10 PRO.OS ON M.2 : STORAGE 8TB HDD, KEYBOARD MOUSE.NO RAILS, NO OPTICAL DRIVE, NO LICENSING 3 YEAR HARDWAREWARRANTY +I-PRO SUPPORT.	PANASONIC	\$3,289.21	42%	\$1,907.74	NEW
NVR-T-1-12TB-V3	I-PRO ST1, SINGLE INTEL 10TH GEN 6CORE / 12THREAD CPU, 16GB RAM, WINDOWS 10 PRO.OS ON M.2 SSD, STORAGE 12TB (NO RAID), KEYBOARD MOUSE.NO RAILS, NO OPTICAL DRIVE. 3 YEAR LIMITEDHARDWAREWARRANTY +I-	PANASONIC	\$4,488.01	42%	\$2,603.04	NEW
NVR-T-1-16TB-V3	I-PRO ST1, SINGLE INTEL 10TH GEN 6CORE / 12THREAD CPU, 16GB RAM, WINDOWS 10 PRO.OS ON M.2 SSD, STORAGE 16TB (NO RAID), KEYBOARD MOUSE.NO RAILS, NO OPTICAL DRIVE. 3 YEAR LIMITEDHARDWAREWARRANTY +I-	PANASONIC	\$4,937.56	42%	\$2,863.78	NEW
NVR-T-1-4TB-V3	I-PRO ST1, SINGLE INTEL 10TH GEN 6CORE / 12THREAD CPU, 16GB RAM, WINDOWS 10 PRO.OS ON M.2 SSD, STORAGE 4TB (NO RAID), KEYBOARD MOUSE.NO RAILS, NO OPTICAL DRIVE. 3 YEAR LIMITEDHARDWAREWARRANTY +I-	PANASONIC	\$3,888.61	42%	\$2,255.39	NEW
NVR-T-1-8TB-V3	I-PRO ST1, SINGLE INTEL 10TH GEN 6CORE / 12THREAD CPU, 16GB RAM, WINDOWS 10 PRO.OS ON M.2 SSD, STORAGE 8TB (NO RAID), KEYBOARD MOUSE.NO RAILS, NO OPTICAL DRIVE. 3 YEAR LIMITEDHARDWAREWARRANTY +I-	PANASONIC	\$4,188.31	42%	\$2,429.22	NEW
NVR-T-1-MSG-V3	I-PRO WT1-A, SINGLE INTEL 10TH GEN 6CORE / 12THREAD CPU, 16GB RAM, WINDOWS 10 PRO.OS ON M.2 SSD. STORAGE 1TB HDD, NVIDIA GT1030, KEYBOARD MOUSE.NO RAILS, NO OPTICAL DRIVE, NO LICENSING 3 YEAR LIMITEDHARDWAREWARRANTY +I-PRO SUPPORT.	PANASONIC	\$3,439.06	42%	\$1,994.65	NEW
NVR-T-1-MWS-V3	I-PRO WT1-B, SINGLE INTEL GEN 6CORE / 12THREAD CPU, 16GB RAM, WINDOWS 10 PRO.OS ON M.2 SSD, STORAGE 1TB HDD, NVIDIA GTX1660, KEYBOARD MOUSE.NO RAILS, NO OPTICAL DRIVE, NO LICENSING 3 YEAR LIMITEDHARDWAREWARRANTY +I-PRO SUPPORT.	PANASONIC	\$4,269.23	42%	\$2,476.15	NEW
NVR-T-1-RDT-V3	I-PRO WT1-D, SINGLE INTEL 11TH GEN 8C/16T CPU, 32GB RAM, WINDOWS 10 PRO.OS ON M.2 STORAGE: 2TB HDD, NVIDIA RTX3060TI, KEYBOARD and MOUSE.NO RAILS, NO OPTICAL DRIVE, NO LICENSING 5YEAR LIMITEDHARDWAREWARRANTY +I- PRO SUPPORT.	PANASONIC	\$6,368.63	42%	\$3,693.80	NEW
NVR-T-1-VW-V3	I-PRO WT1-C, SINGLE INTEL 10TH GEN 6CORE / 12THREAD CPU, 16GB RAM, WINDOWS 10 PRO.OS ON M.2 SSD. STORAGE 1TB HDD, NVIDIA GTX1660, VIDEO WALLPLUS SOFTWARE LICENSE INCLUDED KEYBOARD MOUSE.NO RAILS, NO OPTICAL DRIVE. 3 YEAR LIMITEDHARDWAREWARRANTY +I-PRO SUPPORT.	PANASONIC	\$4,787.71	42%	\$2,776.87	NEW
NVR-T-2-144TB-V3	I-PRO ST3E, DUAL XEON OCTA CORE CPU, 32GB RAM, WINDOWS SERVER STANDARD. OS ON 2X1TB HDD, STORAGE 144TB (RAID 5), KEYBOARD MOUSE.NO RAILS, NO OPTICAL DRIVE. 3 YEAR PRO-LIMITEDHARDWAREWARRANTY WITHON-SIGHT SERVICE. (SPECIAL ORDER ITEM ALLOW 14BUSINESS DAYS FOR DELIVERY)	PANASONIC	\$46,446.01	42%	\$26,938.68	NEW
NVR-T-2-224TB-V3	I-PRO ST3E, DUAL XEON OCTA CORE CPU, 32GB RAM, WINDOWS SERVER STANDARD. OS ON2X1TB HDD, STORAGE 244TB (RAID 5), 208TB USABLE, KEYBOARD MOUSE.NO RAILS, NO OPTICAL DRIVE. 3 YEAR PRO-LIMITEDHARDWAREWARRANTY WITHON-SIGHT SERVICE. (SPECIAL ORDER ITEM	PANASONIC	\$59,932.51	42%	\$34,760.85	NEW
NVR-T-2-64TB-V3	I-PRO ST3E, DUAL XEON OCTA CORE CPU, 32GB RAM, WINDOWS SERVER STANDARD. OS ON 2X1TB HDD, STORAGE 64TB (RAID 5), KEYBOARD MOUSE.NO RAILS, NO OPTICAL DRIVE. 3 YEAR PRO-LIMITEDHARDWAREWARRANTY WITHON-SIGHT SERVICE. (SPECIAL ORDER ITEM ALLOW 14BUSINESS DAYS FOR DELIVERY)	PANASONIC	\$30,412.06	42%	\$17,638.99	NEW
NVR-T-2-96TB-V3	I-PRO ST3E, DUAL XEON OCTA CORE CPU, 32GB RAM, WINDOWS SERVER STANDARD. OS ON 2X1TB HDD, STORAGE 96TB (RAID 5), KEYBOARD MOUSE.NO RAILS, NO OPTICAL DRIVE. 3 YEAR PRO-LIMITEDHARDWAREWARRANTY WITHON-SIGHT SERVICE. (SPECIAL ORDER ITEM ALLOW 14BUSINESS DAYS FOR DELIVERY)	PANASONIC	\$36,705.76	42%	\$21,289.34	NEW
PIP-WJVP4000 WJ-VPU4000	I-PRO ICV4000, VPU4000 RECORDING UNIT.		\$5,805.00	42%	\$3,366.90	NEW



Certified Minority Woman Owned DBE, EDWOSB,
 WOSB, MN-TG/ED, CERT, MNUCP, Section 3
 23549 Cedar Creek Road * Pine City, MN 55063 *
 Phone: (612)900-4026 * Fax: (651)964-2371
 E-mail: CBloom@B2GSALESLLC.COM

PANASONIC



2023 CATALOG

Item	Description	BRAND	B2G SALES LIST PRICE as of 8/1/2023	CLIENT DISCOUNT	CLIENT PRICE EACH	
PIP-WVBWC4000 WV-BWC4000	i-PRO BWC4000 CAM INITIAL CONFIG		\$1,458.00	42%	\$845.64	NEW
PIP-WVBWC40D8 WV-BWC40D8	i-PRO BWC4000 8-BAY DOCKING AND CHARGING		\$2,632.50	42%	\$1,526.85	NEW
PIP-WVVC31 WV-VC31	i-PRO ICV BACKSEAT HD CAMERA WITH IR		\$804.60	42%	\$466.67	NEW
PIP-WVVC32 WV-VC32	i-PRO ICV SIDE WIDE ANGLE HD CAMERA		\$708.75	42%	\$411.08	NEW
PIP-WVVC35 WV-VC35	i-PRO ICV FRONT WIDE ANGLE FHD CAMERA WI		\$1,660.50	42%	\$963.09	NEW
PIP-WVVC41P WV-VCF41P	i-PRO ICV FRONT PANORAMIC 4K CAMERA		\$2,322.00	42%	\$1,346.76	NEW
WJGX100	1 Channel Encoder	PANASONIC	\$575.42	42%	\$333.75	NEW
WJGX500	H.264 4 channel Encoder	PANASONIC	\$1,336.66	42%	\$775.26	NEW
WJ-HXE400/2700T3	H.265 Network Video Recorder, 27TB (3TBx9)	PANASONIC	\$10,495.49	42%	\$6,087.39	NEW
WJ-HXE400/3600T4	H.265 Network Video Recorder, 36TB (4TBx9)	PANASONIC	\$12,032.96	42%	\$6,979.11	NEW
WJ-HXE400/4000T4	H.265 Network Video Recorder, 4TB (4TBx1)	PANASONIC	\$7,005.49	42%	\$4,063.18	NEW
WJ-HXE400/5400T6	H.265 Network Video Recorder, 54TB (6TBx9)	PANASONIC	\$15,401.58	42%	\$8,932.92	NEW
WJ-HXE400/6000T6	H.265 Network Video Recorder, 6TB (6TBx1)	PANASONIC	\$7,380.11	42%	\$4,280.47	NEW
WJ-NVE30W	8 Channel Upgrade	PANASONIC	\$2,160.84	42%	\$1,253.29	NEW
WJ-NVF30W	Business Intelligence Kit for NV300	PANASONIC	\$1,808.69	42%	\$1,049.04	NEW
WJ-NX200/1200T6	H.265 Network Video Recorder, 12TB (6TBx2)	PANASONIC	\$4,248.25	42%	\$2,463.98	NEW
WJ-NX200/4000T4	H.265 Network Video Recorder, 4TB (4TBx1)	PANASONIC	\$2,791.71	42%	\$1,619.19	NEW
WJ-NX200/6000T6	H.265 Network Video Recorder, 6TB (6TBx1)	PANASONIC	\$3,179.82	42%	\$1,844.29	NEW
WJ-NX200/8000T4	H.265 Network Video Recorder, 8TB (6TBx2)	PANASONIC	\$3,473.52	42%	\$2,014.64	NEW
WJ-NX200KP	9-16CH NVR H.265/H.264 W/ NO HDD	PANASONIC	\$2,126.00	42%	\$1,233.08	NEW
WJ-NX300/4000T4	H.265 NETWORK VIDEO RECORDER, 4TB (4TBx1)	PANASONIC	\$5,214.78	42%	\$3,024.57	NEW
WJ-NX300/6000T6	H.265 NETWORK VIDEO RECORDER, 6TB (6TBx1)	PANASONIC	\$5,545.95	42%	\$3,216.65	NEW
WJ-NX300KP	16-32CH NVR H.265/H.264 W/ NO HDD	PANASONIC	\$4,451.71	42%	\$2,581.99	NEW
WJ-NX400/3600T4	H.265 Network Video Recorder, 36TB (4TBx9)	PANASONIC	\$18,810.67	42%	\$10,910.19	NEW
WJ-NX400/4000T4	H.265 Network Video Recorder, 4TB (4TBx1)	PANASONIC	\$13,778.71	42%	\$7,991.65	NEW
WJ-NX400/5400T6	H.265 Network Video Recorder, 54TB (6TBx9)	PANASONIC	\$22,179.30	42%	\$12,863.99	NEW
WJ-NX400/6000T6	H.265 Network Video Recorder, 6TB (6TBx1)	PANASONIC	\$14,153.33	42%	\$8,208.93	NEW
WJ-NX400KP	64-128 CH NVR H.265/H.264 W/ NO HDD	PANASONIC	\$12,885.93	42%	\$7,473.84	NEW
WJ-NXE20W	EXTENSION LICENSE FOR NX200, 9CH TO 16CH	PANASONIC	\$825.67	42%	\$478.89	NEW
WJ-NXE30W	EXTENSION LICENSE FOR NX300, 8CH LICENSE	PANASONIC	\$825.67	42%	\$478.89	NEW
WJ-NXE40W	32 Channel Extension License for WJ-NX400	PANASONIC	\$5,626.87	42%	\$3,263.58	NEW
WJ-NXR30W	EXTENSION LICENSE FOR NX300, ENABLE RAID	PANASONIC	\$825.67	42%	\$478.89	NEW
WJ-NXS01W	Secure Communications 1 channel license	PANASONIC	\$323.68	42%	\$187.73	NEW
WJ-NXS04W	Secure Communications 4 channel license	PANASONIC	\$689.31	42%	\$399.80	NEW
WJ-NXS16W	Secure Communications 16 channel license	PANASONIC	\$1,904.59	42%	\$1,104.66	NEW
WJ-NXS32W	Secure Communications 32 channel license	PANASONIC	\$3,079.42	42%	\$1,786.06	NEW
WJ-PC200	Coaxial-LAN Converter, Camera side, 1ch	PANASONIC	\$322.18	42%	\$186.86	NEW
WJ-PR201	Coaxial-LAN Converter, Receiver side, 1ch	PANASONIC	\$362.64	42%	\$210.33	NEW
WJ-PR204	Coaxial-LAN Converter, Receiver side, 4ch	PANASONIC	\$942.56	42%	\$546.68	NEW
WM100	MAGNETIC CABLE MOUNT, 100PK	PANASONIC	\$610.13	42%	\$353.87	NEW
WV-ASE201W	Security Camera Software Key	PANASONIC	\$1,201.80	42%	\$697.04	NEW
WV-ASE202W	Security Camera Software Key	PANASONIC	\$1,201.80	42%	\$697.04	NEW
WV-ASE203W	Security Camera Software Key	PANASONIC	\$1,201.80	42%	\$697.04	NEW
WV-ASE204W	Security Camera Software Key	PANASONIC	\$2,052.95	42%	\$1,190.71	NEW
WV-ASE205W	Visibility Enhancement Extension: Fog, Snow, Sand, Rain, Noise Reduction	PANASONIC	\$16,669.31	42%	\$9,668.20	NEW
WV-ASE306W	VI Server Registration License for ASM300	PANASONIC	\$2,085.91	42%	\$1,209.83	NEW
WV-ASE902W	ASM970 Extension Software for 64 Monitor Screens	PANASONIC	\$1,862.64	42%	\$1,080.33	NEW
WV-ASF901W	FacePro 1-Channel Expansion	PANASONIC	\$1,895.60	42%	\$1,099.45	NEW
WV-ASM300UGW	Upgrade license for ASM300	PANASONIC	\$1,146.35	42%	\$664.88	NEW
WV-ASM300W	i-Pro Video Management Software	PANASONIC	\$2,294.20	42%	\$1,330.64	NEW
WV-ASVE104W	VEHICLE SEARCH 4CH CAMERA LICENSE	PANASONIC	\$3,296.70	42%	\$1,912.09	NEW
WV-CU980	ETHERNET SYSTEM CONTROLLER FOR ASM300/VIDEO INSIGHT	PANASONIC	\$4,320.18	42%	\$2,505.70	NEW
WV-Q117A	Pendant Mount Bracket for CS584	PANASONIC	\$343.16	42%	\$199.03	NEW
WV-Q118B	Wall Mount Option for WVC584	PANASONIC	\$404.60	42%	\$234.67	NEW
WVQ119	Wall Mount Bracket for SC588	PANASONIC	\$317.68	42%	\$184.26	NEW
WV-Q121B	Ceiling Mount Bracket for ULTRA360 and PTZ Cameras	PANASONIC	\$436.06	42%	\$252.92	NEW
WV-Q122A	Wall Mount Bracket for SW599	PANASONIC	\$587.41	42%	\$340.70	NEW
WV-Q158C	WALL MOUNT BRACKET FOR S6130, CLEAR	PANASONIC	\$413.59	42%	\$239.88	NEW
WV-Q158S	WALL MOUNT BRACKET FOR S6130, SMOKED	PANASONIC	\$413.59	42%	\$239.88	NEW
WV-Q159C	EMBEDDED CEILING MOUNT FOR S6130, CLEAR	PANASONIC	\$362.64	42%	\$210.33	NEW
WV-Q159S	EMBEDDED CEILING MOUNT FOR S6130, SMOKED	PANASONIC	\$362.64	42%	\$210.33	NEW
WV-Q169A	Embedded ceiling mount bracket, compatible with SFV Series	PANASONIC	\$472.03	42%	\$273.78	NEW
WV-QCA500APK	RJ45 ETHERNET CABLE, INCLUDING WATERPROOF CONNECTOR AND THE CAP, 10 PACK COMPATIBLE PRODUCTS : WV-S2536LN, WV-S1536LN	PANASONIC	\$432.77	42%	\$251.00	NEW
WV-QCA501APK	MULTI I/O CABLE FOR ALARM IN/OUT, 12V DC INPUT, AUDIO IN/OUT, INCLUDING WATERPROOF TAPE, 4P ALARM CABLE, 2P POWER CABLE, 10 PACK COMPATIBLE PRODUCTS : WV-S2536LN, WV-S1536LN	PANASONIC	\$605.89	42%	\$351.42	NEW
WV-QCL501-W	CEILING MOUNT BRACKET (SAME SHAPE AS WV-Q121B) WHITE	PANASONIC	\$427.78	42%	\$248.11	NEW
WV-QEM500-W	EMBEDDED CEILING MOUNT BRACKET (SAME SHAPE AS WV-Q169A) WHITE	PANASONIC	\$462.59	42%	\$268.30	NEW
WV-QWL501-B	WALL MOUNT BRACKET (SAME SHAPE AS WV-Q122A) BLACK, MADE-TO-ORDER MODEL	PANASONIC	\$576.05	42%	\$334.11	NEW
WV-QWL501-W	WALL MOUNT BRACKET (SAME SHAPE AS WV-Q122A) WHITE	PANASONIC	\$576.05	42%	\$334.11	NEW



Certified Minority Woman Owned DBE, EDWOSB,
 WOSB, MN-TG/ED, CERT, MNUCP, Section 3
 23549 Cedar Creek Road * Pine City, MN 55063 *
 Phone: (612)900-4026 * Fax: (651)964-2371
 E-mail: CBloom@B2GSALESLLC.COM

PANASONIC



2023 CATALOG

Item	Description	BRAND	B2G SALES LIST PRICE as of 8/1/2023	CLIENT DISCOUNT	CLIENT PRICE EACH	
WV-S1111	720P H.265 Indoor Box Style Camera	PANASONIC	\$1,258.74	42%	\$730.07	NEW
WV-S1131	1080P H.265 Indoor Box Style Camera	PANASONIC	\$1,452.05	42%	\$842.19	NEW
WV-S1136	1080P INDOOR BOX CAMERA WITH AI ENGINE, H.265/H.264/MJPEG, LENS NOT INCLUDED, 5 YEAR WARRANTY, VIDEO INSIGHT 7.8.3 OR HIGHER	PANASONIC	\$1,018.05	42%	\$590.47	NEW
WV-S1511LN	720P H.265 Outdoor Box Camera w/IR LED	PANASONIC	\$1,162.84	42%	\$674.44	NEW
WV-S1536LN	1080P OUTDOOR VANDAL RESISTANT BOX CAMERA WITH AI ENGINE, H.265/H.264/MJPEG, 2.9-9MM 3.1X MOTORIZED ZOOM LENS, IR LED, IP66, IK10, CLEARSIGHT DOME, 5 YEAR WARRANTY, VIDEO INSIGHT 7.8.3 OR HIGHER	PANASONIC	\$1,306.86	42%	\$757.98	NEW
WV-S1536LN-B	1080P OUTDOOR VANDAL RESISTANT BOX CAMERA WITH AI ENGINE, H.265/H.264/MJPEG, 2.9-9MM 3.1X MOTORIZED ZOOM LENS, IR LED, IP66, IK10, CLEARSIGHT DOME, 5 YEAR WARRANTY, VIDEO INSIGHT 7.8.3 OR HIGHER, BLACK COLOR, MADE-TO-ORDER MODEL	PANASONIC	\$1,306.86	42%	\$757.98	NEW
WV-S1536LTN	1080P OUTDOOR VANDAL RESISTANT BOX CAMERA WITH AI ENGINE, H.265/H.264/MJPEG, 9-21MM 2.3X MOTORIZED ZOOM LENS, IR LED, IP66, IK10, CLEARSIGHT DOME, 5 YEAR WARRANTY, VIDEO INSIGHT 7.8.3 OR HIGHER	PANASONIC	\$1,441.68	42%	\$836.17	NEW
WV-S15500-V3LN	5MP OUTDOOR VANDAL RESISTANT BULLET CAMERA WITH AI ENGINE, H.265/H.264/MJPEG, 2.9-9MM 3.1X MOTORIZED ZOOM LENS, IR LED, IP66, IK10, FIPS 140-2 LEVEL 3 COMPLIANT, CLEARSIGHT DOME, 5 YEAR WARRANTY, VIDEO INSIGHT 7.9.2 OR HIGHER	PANASONIC	\$1,550.17	42%	\$899.10	NEW
WV-S1550L	5MP OUTDOOR FIXED CAMERA H.265 W/IR	PANASONIC	\$1,796.70	42%	\$1,042.09	NEW
WV-S1552L	5MP OUTDOOR VANDAL RESISTANT BOX CAMERA, H.265/H.264/MJPEG, 2.9-9MM 3.1X MOTORIZED ZOOM LENS, IR LED, IP66, IK10, 5 YEAR WARRANTY, VIDEO INSIGHT 7.8 OR HIGHER	PANASONIC	\$1,714.91	42%	\$994.65	NEW
WV-S15700-V2LN	4K OUTDOOR VANDAL RESISTANT BULLET CAMERA WITH AI ENGINE, H.265/H.264/MJPEG, 4.3-8.6MM 2.0X MOTORIZED ZOOM LENS, IR LED, IP66, IK10, FIPS 140-2 LEVEL 3 COMPLIANT, CLEARSIGHT DOME, 5 YEAR WARRANTY, VIDEO INSIGHT 7.9.2 OR HIGHER	PANASONIC	\$2,066.90	42%	\$1,198.80	NEW
WV-S1570L	4K, OUTDOOR VANDAL RESISTANT BOX CAMERA, H.265	PANASONIC	\$2,113.15	42%	\$1,225.63	NEW
WV-S1572L	4K OUTDOOR VANDAL RESISTANT BOX CAMERA, H.265/H.264/MJPEG, 4.3-8.6MM 2.0X MOTORIZED ZOOM LENS, IR LED, IP66, IK10, 5 YEAR WARRANTY, VIDEO INSIGHT 7.8 OR HIGHER	PANASONIC	\$2,072.01	42%	\$1,201.76	NEW
WV-S2110	720P H.265 Indoor Dome Camera	PANASONIC	\$810.69	42%	\$470.20	NEW
WV-S2111L	720P H.265 Indoor Dome Camera w/IR LED	PANASONIC	\$888.61	42%	\$515.39	NEW
WV-S2131L	1080P H.265 Indoor Dome Camera w/IR LED	PANASONIC	\$1,044.45	42%	\$605.78	NEW
WV-S2136L	1080P INDOOR DOME CAMERA WITH AI ENGINE, H.265/H.264/MJPEG, 2.9-9.0MM 3.1X MOTORIZED ZOOM LENS, IR LED, 5 YEAR WARRANTY, VIDEO INSIGHT 7.8.3 OR HIGHER	PANASONIC	\$939.98	42%	\$545.19	NEW
WV-S2136L-B	1080P INDOOR DOME CAMERA WITH AI ENGINE, H.265/H.264/MJPEG, 2.9-9.0MM 3.1X MOTORIZED ZOOM LENS, IR LED, 5 YEAR WARRANTY, VIDEO INSIGHT 7.8.3 OR HIGHER, BLACK COLOR, MADE-TO-ORDER MODEL	PANASONIC	\$939.98	42%	\$545.19	NEW
WV-S2136LG	1080P INDOOR DOME CAMERA WITH AI ENGINE, H.265/H.264/MJPEG, 2.9-9.0MM 3.1X MOTORIZED ZOOM LENS, IR LED, SMOKE DOME, 5 YEAR WARRANTY, VIDEO INSIGHT 7.8.3 OR HIGHER, MADE TO ORDER MODEL	PANASONIC	\$939.98	42%	\$545.19	NEW
WV-S2136LG-B	1080P INDOOR DOME CAMERA WITH AI ENGINE, H.265/H.264/MJPEG, 2.9-9.0MM 3.1X MOTORIZED ZOOM LENS, IR LED, 5 YEAR WARRANTY, VIDEO INSIGHT 7.8.3 OR HIGHER, BLACK COLOR, SMOKE DOME, MADE-TO-ORDER	PANASONIC	\$939.98	42%	\$545.19	NEW
WV-S2211L	720P H.265 Indoor Vandal Dome w/IR LED	PANASONIC	\$966.53	42%	\$560.59	NEW
WV-S2236L	1080P INDOOR VANDAL DOME CAMERA WITH AI ENGINE, H.265/H.264/MJPEG, 2.9-9.0MM 3.1X MOTORIZED ZOOM LENS, IR LED, IK10, 5 YEAR WARRANTY, VIDEO INSIGHT 7.8.3 OR HIGHER	PANASONIC	\$982.81	42%	\$570.03	NEW
WV-S2236L-B	1080P INDOOR VANDAL DOME CAMERA WITH AI ENGINE, H.265/H.264/MJPEG, 2.9-9.0MM 3.1X MOTORIZED ZOOM LENS, IR LED, IK10, 5 YEAR WARRANTY, VIDEO INSIGHT 7.8.3 OR HIGHER, BLACK COLOR, MADE-TO-ORDER MODEL	PANASONIC	\$982.81	42%	\$570.03	NEW
WV-S2236LG	1080P INDOOR VANDAL DOME CAMERA WITH AI ENGINE, H.265/H.264/MJPEG, 2.9-9.0MM 3.1X MOTORIZED ZOOM LENS, IR LED, IK10, SMOKE DOME, 5 YEAR WARRANTY, VIDEO INSIGHT 7.8.3 OR HIGHER, MADE TO ORDER MODEL	PANASONIC	\$982.81	42%	\$570.03	NEW
WV-S2236LG-B	1080P INDOOR VANDAL DOME CAMERA WITH AI ENGINE, H.265/H.264/MJPEG, 2.9-9.0MM 3.1X MOTORIZED ZOOM LENS, IR LED, IK10, 5 YEAR WARRANTY, VIDEO INSIGHT 7.8.3 OR HIGHER, BLACK COLOR, SMOKE DOME, MADE-TO-	PANASONIC	\$982.81	42%	\$570.03	NEW
WV-S22500-V3L	5MP INDOOR VANDAL RESISTANT DOME CAMERA WITH AI ENGINE, H.265/H.264/MJPEG, 2.9-9MM 3.1X MOTORIZED ZOOM LENS, IR LED, IP66, IK10, FIPS 140-2 LEVEL 3 COMPLIANT, 5 YEAR WARRANTY, VIDEO INSIGHT 7.9.2 OR	PANASONIC	\$1,240.13	42%	\$719.27	NEW
WV-S2250L	5MP INDOOR VANDAL DOME CAMERA H.265 W/IR	PANASONIC	\$1,483.52	42%	\$860.44	NEW
WV-S2252L	5MP INDOOR VANDAL RESISTANT DOME CAMERA, H.265/H.264/MJPEG, 2.9-9MM 3.1X MOTORIZED ZOOM LENS, IR LED, IK10, 5 YEAR WARRANTY, VIDEO INSIGHT 7.8 OR HIGHER	PANASONIC	\$1,415.21	42%	\$820.82	NEW
WV-S22700-V2L	4K INDOOR VANDAL RESISTANT DOME CAMERA WITH AI ENGINE, H.265/H.264/MJPEG, 4.3-8.6MM 2.0X MOTORIZED ZOOM LENS, IR LED, IP66, IK10, FIPS 140-2 LEVEL 3 COMPLIANT, 5 YEAR WARRANTY, VIDEO INSIGHT 7.9.2	PANASONIC	\$1,756.86	42%	\$1,018.98	NEW
WV-S2272L	4K INDOOR VANDAL RESISTANT DOME CAMERA, H.265/H.264/MJPEG, 4.3-8.6MM 2.0X MOTORIZED ZOOM LENS, IR LED, IK10, 5 YEAR WARRANTY, VIDEO INSIGHT 7.8 OR HIGHER	PANASONIC	\$1,796.67	42%	\$1,042.07	NEW



Certified Minority Woman Owned DBE, EDWOSB,
 WOSB, MN-TG/ED, CERT, MNUCP, Section 3
 23549 Cedar Creek Road * Pine City, MN 55063 *
 Phone: (612)900-4026 * Fax: (651)964-2371
 E-mail: CBloom@B2GSALESLLC.COM

PANASONIC



2023 CATALOG

Item	Description	BRAND	B2G SALES LIST PRICE as of 8/1/2023	CLIENT DISCOUNT	CLIENT PRICE EACH	
WV-S2536LGN	1080P OUTDOOR VANDAL RESISTANT DOME CAMERA WITH AI ENGINE, H.265/H.264/MJPEG, 2.9-9MM 3.1X MOTORIZED ZOOM LENS, IR LED, IP66, IK10, SMOKE DOME, CLEARSIGHT DOME, 5 YEAR WARRANTY, VIDEO INSIGHT 7.8.3 OR HIGHER, MADE TO ORDER MODEL	PANASONIC	\$1,185.90	42%	\$687.82	NEW
WV-S2536LN	1080P OUTDOOR VANDAL RESISTANT DOME CAMERA WITH AI ENGINE, H.265/H.264/MJPEG, 2.9-9MM 3.1X MOTORIZED ZOOM LENS, IR LED, IP66, IK10, CLEARSIGHT DOME, 5 YEAR WARRANTY, VIDEO INSIGHT 7.8.3 OR HIGHER	PANASONIC	\$1,185.90	42%	\$687.82	NEW
WV-S2536LTN	1080P OUTDOOR VANDAL RESISTANT DOME CAMERA WITH AI ENGINE, H.265/H.264/MJPEG, 9-21MM 2.3X MOTORIZED ZOOM LENS, IR LED, IP66, IK10, CLEARSIGHT DOME, 5 YEAR WARRANTY, VIDEO INSIGHT 7.8.3 OR HIGHER	PANASONIC	\$1,445.77	42%	\$838.55	NEW
WV-S25500-V3LN	5MP OUTDOOR VANDAL RESISTANT DOME CAMERA WITH AI ENGINE, H.265/H.264/MJPEG, 2.9-9MM 3.1X MOTORIZED ZOOM LENS, IR LED, IP66, IK10, FIPS 140-2 LEVEL 3 COMPLIANT, CLEARSIGHT DOME, 5 YEAR WARRANTY, VIDEO INSIGHT 7.9.2 OR HIGHER	PANASONIC	\$1,446.82	42%	\$839.15	NEW
WV-S2550L	5MP OUTDOOR VANDAL DOME CAM H.265 W/IR	PANASONIC	\$1,796.70	42%	\$1,042.09	NEW
WV-S2552L	5MP OUTDOOR VANDAL RESISTANT DOME CAMERA, H.265/H.264/MJPEG, 2.9-9MM 3.1X MOTORIZED ZOOM LENS, IR LED, IP66, IK10, 5 YEAR WARRANTY, VIDEO INSIGHT 7.8 OR HIGHER	PANASONIC	\$1,714.91		\$994.65	NEW
WV-S25700-V2LN	4K OUTDOOR VANDAL RESISTANT DOME CAMERA WITH AI ENGINE, H.265/H.264/MJPEG, 4.3-8.6MM 2.0X MOTORIZED ZOOM LENS, IR LED, IP66, IK10, FIPS 140-2 LEVEL 3 COMPLIANT, CLEARSIGHT DOME, 5 YEAR WARRANTY, VIDEO INSIGHT 7.9.2 OR HIGHER	PANASONIC	\$1,963.54	42%	\$1,138.86	NEW
WV-S2572L	4K OUTDOOR VANDAL RESISTANT DOME CAMERA, H.265/H.264/MJPEG, 4.3-8.6MM 2.0X MOTORIZED ZOOM LENS, IR LED, IP66, IK10, 5 YEAR WARRANTY, VIDEO INSIGHT 7.8 OR HIGHER	PANASONIC	\$2,016.91	42%	\$1,169.81	NEW
WV-S3111L	720P H.265 INDOOR DOME IR	PANASONIC	\$507.32	42%	\$294.24	NEW
WV-S3131L	1080P H.265 INDOOR DOME IR	PANASONIC	\$594.51	42%	\$344.82	NEW
WV-S3511L	720P H.265 OUTDOOR VANDAL DOME IR	PANASONIC	\$557.25	42%	\$323.20	NEW
WV-S3512LM	720P H.265 OUTDOOR VANDAL DOME IR M12	PANASONIC	\$836.81	42%	\$485.35	NEW
WV-S3531L	1080P H.265 OUTDOOR VANDAL DOME IR	PANASONIC	\$687.72	42%	\$398.88	NEW
WV-S3532LM	1080P H.265 OUTDOOR VANDAL DOME IR M12	PANASONIC	\$1,023.18	42%	\$593.44	NEW
WV-S4150	5MP 360 INDOOR DOME H.265	PANASONIC	\$1,051.95	42%	\$610.13	NEW
WV-S4151	5MP SENSOR INDOOR 360 DOME CAMERA, H.265/H.264/MJPEG, 0.84MM FISHEYE LENS, 2192X2192PIXEL UP TO 30FPS, AUDIO IN/OUT, BUILT-IN MIC, 5 YEAR WARRANTY, VIDEO INSIGHT 7.8 OR HIGHER	PANASONIC	\$1,018.20	42%	\$590.56	NEW
WV-S4156	5MP SENSOR INDOOR 360 DOME CAMERA WITH AI ENGINE, H.265/H.264/MJPEG, 0.84MM FISHEYE LENS, 2192X2192PIXEL UP TO 30FPS, AUDIO IN/OUT, BUILT-IN MIC, 5 YEAR WARRANTY, VIDEO INSIGHT 7.9 OR HIGHER	PANASONIC	\$883.62	42%	\$512.50	NEW
WV-S4176	12MP SENSOR INDOOR 360 DOME CAMERA WITH AI ENGINE, H.265/H.264/MJPEG, 1.4MM FISHEYE LENS, 2992X2992PIXEL UP TO 30FPS, AUDIO IN/OUT, BUILT-IN MIC, 5 YEAR WARRANTY, VIDEO INSIGHT 7.9 OR HIGHER	PANASONIC	\$1,265.83	42%	\$734.18	NEW
WV-S4550LM	5MP 360 OUTDOOR DOME H.265 W/IR M12	PANASONIC	\$1,690.31	42%	\$980.38	NEW
WV-S4551L	5MP SENSOR OUTDOOR VANDAL RESISTANT 360 DOME CAMERA, H.265/H.264/MJPEG, 0.84MM FISHEYE LENS, 2192X2192PIXEL UP TO 30FPS, IR LED, IP66, IK10, AUDIO IN/OUT, 5 YEAR WARRANTY, VIDEO INSIGHT 7.8 OR HIGHER	PANASONIC	\$1,459.40	42%	\$846.45	NEW
WV-S4551LM	5MP SENSOR OUTDOOR VANDAL RESISTANT 360 DOME CAMERA, H.265/H.264/MJPEG, 0.84MM FISHEYE LENS, 2192X2192PIXEL UP TO 30FPS, IR LED, IP66, IK10, AUDIO IN/OUT, M12 CONNECTOR, 5 YEAR WARRANTY, VIDEO INSIGHT 7.8 OR HIGHER	PANASONIC	\$1,586.70	42%	\$920.29	NEW
WV-S4556L	5MP SENSOR OUTDOOR VANDAL RESISTANT 360 DOME CAMERA WITH AI ENGINE, H.265/H.264/MJPEG, 0.84MM FISHEYE LENS, 2192X2192PIXEL UP TO 30FPS, IR LED, IP66, IK10, AUDIO IN/OUT, 5 YEAR WARRANTY, VIDEO INSIGHT 7.9 OR HIGHER	PANASONIC	\$1,222.03	42%	\$708.78	NEW
WV-S4556LM	5MP SENSOR OUTDOOR VANDAL RESISTANT 360 DOME CAMERA WITH AI ENGINE, H.265/H.264/MJPEG, 0.84MM FISHEYE LENS, 2192X2192PIXEL UP TO 30FPS, IR LED, IP66, IK10, AUDIO IN/OUT, M12 CONNECTOR, 5 YEAR WARRANTY, VIDEO INSIGHT 7.9 OR HIGHER	PANASONIC	\$1,662.29	42%	\$964.13	NEW
WV-S4576L	12MP SENSOR OUTDOOR VANDAL RESISTANT 360 DOME CAMERA WITH AI ENGINE, H.265/H.264/MJPEG, 1.4MM FISHEYE LENS, 2992X2992PIXEL UP TO 30FPS, IR LED, IP66, IK10, AUDIO IN/OUT, 5 YEAR WARRANTY, VIDEO INSIGHT 7.9 OR HIGHER	PANASONIC	\$1,395.67	42%	\$809.49	NEW
WV-S4576LM	12MP SENSOR OUTDOOR VANDAL RESISTANT 360 DOME CAMERA WITH AI ENGINE, H.265/H.264/MJPEG, 1.4MM FISHEYE LENS, 2992X2992PIXEL UP TO 30FPS, IR LED, IP66, IK10, AUDIO IN/OUT, M12 CONNECTOR, 5 YEAR WARRANTY, VIDEO INSIGHT 7.9 OR HIGHER	PANASONIC	\$2,800.07	42%	\$1,624.04	NEW
WV-S6111	720P H.265 Indoor PTZ Style Camera	PANASONIC	\$4,552.44	42%	\$2,640.42	NEW
WV-S6130	1080P H.265 Indoor PTZ Style Camera 21X	PANASONIC	\$2,322.68	42%	\$1,347.15	NEW
WV-S6131	1080P H.265 Indoor PTZ Style Camera	PANASONIC	\$4,940.55	42%	\$2,865.52	NEW
WV-S6530N	1080P H.265 Outdoor PTZ 21X Zoom	PANASONIC	\$3,872.12	42%	\$2,245.83	NEW
WV-S6532LN	FULLHD OUTDOOR VANDAL PTZ NETWORK CAMERA, H.265, WITH 22X LENS, CLEARSIGHT COATING DOME	PANASONIC	\$4,285.71	42%	\$2,485.71	NEW
WV-S8531N	4XFHD(BMP) MULTI-SENSOR OUTDOOR VANDAL RESISTANCE CAMERA. H.265/H.264/MJPEG.3.2-5.7MM 2.5X MOTORIZED ZOOM LENS. 1920X1080PIXEL UP TO 30FPS. IP66, IK10, CLEARSIGHT COATING. 5 YEAR WARRANTY. VIDEO INSIGHT 7.8.2 OR HIGHER, WHITE COLOR	PANASONIC	\$3,702.88	42%	\$2,147.67	NEW



Certified Minority Woman Owned DBE, EDWOSB,
 WOSB, MN-TG/ED, CERT, MNUCP, Section 3
 23549 Cedar Creek Road * Pine City, MN 55063 *
 Phone: (612)900-4026 * Fax: (651)964-2371
 E-mail: CBloom@B2GSALESLLC.COM

PANASONIC



2023 CATALOG

Item	Description	BRAND	B2G SALES LIST PRICE as of 8/1/2023	CLIENT DISCOUNT	CLIENT PRICE EACH	
WV-S8543	3X4MP(12MP) MULTI-SENSOR OUTDOOR VANDAL RESISTANCE CAMERA WITH AI ENGINE. H.265/H.264/MJPEG. 2.9-7.3MM 2.5X MOTORIZED ZOOM LENS. 2699X1520PIXEL UP TO 30FPS. IP66, IP67, IK10, FIPS 140-2 LEVEL 3 COMPLIANT, 5 YEAR WARRANTY. VIDEO INSIGHT 7.9.X OR HIGHER, WHITE COLOR	PANASONIC	\$2,966.00	42%	\$1,720.28	NEW
WV-S8543L	3X4MP(12MP) MULTI-SENSOR OUTDOOR VANDAL RESISTANCE CAMERA WITH AI ENGINE. H.265/H.264/MJPEG. 2.9-7.3MM 2.5X MOTORIZED ZOOM LENS. 2699X1520PIXEL UP TO 30FPS. IR LED, IP66, IP67, IK10, FIPS 140-2 LEVEL 3 COMPLIANT, 5 YEAR WARRANTY. VIDEO INSIGHT 7.9.X OR HIGHER, WHITE	PANASONIC	\$3,482.72	42%	\$2,019.98	NEW
WV-S8544	4X4MP(16MP) MULTI-SENSOR OUTDOOR VANDAL RESISTANCE CAMERA WITH AI ENGINE. H.265/H.264/MJPEG. 2.9-7.3MM 2.5X MOTORIZED ZOOM LENS. 2699X1520PIXEL UP TO 30FPS. IP66, IP67, IK10, FIPS 140-2 LEVEL 3 COMPLIANT, 5 YEAR WARRANTY. VIDEO INSIGHT 7.9.X OR HIGHER, WHITE COLOR	PANASONIC	\$3,482.72	42%	\$2,019.98	NEW
WV-S8544L	4X4MP(16MP) MULTI-SENSOR OUTDOOR VANDAL RESISTANCE CAMERA WITH AI ENGINE. H.265/H.264/MJPEG. 2.9-7.3MM 2.5X MOTORIZED ZOOM LENS. 2699X1520PIXEL UP TO 30FPS. IR LED, IP66, IP67, IK10, FIPS 140-2 LEVEL 3 COMPLIANT, 5 YEAR WARRANTY. VIDEO INSIGHT 7.9.X OR HIGHER, WHITE	PANASONIC	\$3,999.45	42%	\$2,319.68	NEW
WV-S8563L	3X6MP(19MP) MULTI-SENSOR OUTDOOR VANDAL RESISTANCE CAMERA WITH AI ENGINE. H.265/H.264/MJPEG. 3.1MM FIXED LENS. 3328X1872PIXEL UP TO 15FPS. IR LED, IP66, IP67, IK10, FIPS 140-2 LEVEL 3 COMPLIANT, 5 YEAR WARRANTY. VIDEO INSIGHT 7.9.X OR HIGHER, WHITE COLOR	PANASONIC	\$3,999.45	42%	\$2,319.68	NEW
WV-S8564L	4X6MP(25MP) MULTI-SENSOR OUTDOOR VANDAL RESISTANCE CAMERA WITH AI ENGINE. H.265/H.264/MJPEG. 3.1MM FIXED LENS. 3328X1872PIXEL UP TO 15FPS. IR LED, IP66, IP67, IK10, FIPS 140-2 LEVEL 3 COMPLIANT, 5 YEAR WARRANTY. VIDEO INSIGHT 7.9.X OR HIGHER, WHITE COLOR	PANASONIC	\$4,516.18	42%	\$2,619.38	NEW
WV-S8573L	3X4K(25MP) MULTI-SENSOR OUTDOOR VANDAL RESISTANCE CAMERA WITH AI ENGINE. H.265/H.264/MJPEG. 3.1MM FIXED LENS. 3840X2160PIXEL UP TO 15FPS. IR LED, IP66, IP67, IK10, FIPS 140-2 LEVEL 3 COMPLIANT, 5 YEAR WARRANTY. VIDEO INSIGHT 7.9.X OR HIGHER, WHITE COLOR	PANASONIC	\$4,516.18	42%	\$2,619.38	NEW
WV-S8574L	4X4K(33MP) MULTI-SENSOR OUTDOOR VANDAL RESISTANCE CAMERA WITH AI ENGINE. H.265/H.264/MJPEG. 3.1MM FIXED LENS. 3840X2160PIXEL UP TO 15FPS. IR LED, IP66, IP67, IK10, FIPS 140-2 LEVEL 3 COMPLIANT, 5 YEAR WARRANTY. VIDEO INSIGHT 7.9.X OR HIGHER, WHITE COLOR	PANASONIC	\$5,032.91	42%	\$2,919.09	NEW
WV-SBV111M	720p Rugged Mobile Network Camera	PANASONIC	\$1,206.29	42%	\$699.65	NEW
WV-SBV131M	1080p Rugged Mobile Network Camera	PANASONIC	\$1,371.13	42%	\$795.25	NEW
WV-SDA128G	SDXC MEMORY CARD FOR I-PRO DEVICES (128GB) MAKE-TO-ORDER PRODUCT, STANDARD DELIVERY DATE 3 MONTHS	PANASONIC	\$324.90	42%	\$188.44	NEW
WV-SDA256G	SDXC MEMORY CARD FOR I-PRO DEVICES (256GB) MAKE-TO-ORDER PRODUCT, STANDARD DELIVERY DATE 3 MONTHS	PANASONIC	\$591.65	42%	\$343.16	NEW
WV-SDA512G	SDXC MEMORY CARD FOR I-PRO DEVICES (512GB) MAKE-TO-ORDER PRODUCT, STANDARD DELIVERY DATE 3 MONTHS	PANASONIC	\$1,082.68	42%	\$627.96	NEW
WV-SDB256G	MICROSDXC MEMORY CARD FOR I-PRO DEVICES (256GB) MAKE-TO-ORDER PRODUCT, STANDARD DELIVERY DATE 3 MONTHS	PANASONIC	\$576.13	42%	\$334.15	NEW
WV-SFV110M	720p Outdoor Vandal Dome NW Cam M-cable	PANASONIC	\$665.33	42%	\$385.89	NEW
WV-SFV130M	1080p Outdoor Vandal Dome NW Cam M-cable	PANASONIC	\$902.10	42%	\$523.22	NEW
WV-SFV781L	Outdoor 4K Vandal Dome Network Camera with IR LED	PANASONIC	\$4,544.95	42%	\$2,636.07	NEW
WV-SPV781L	Outdoor 4K Vandal Fixed Network Camera with IR LED	PANASONIC	\$4,544.95	42%	\$2,636.07	NEW
WV-SUD638	30x Full HD Aero PTZ Network Camera	PANASONIC	\$14,019.97	42%	\$8,131.58	NEW
WV-SUD6FRL1	Optional IR LED unit for WV-SUD638	PANASONIC	\$2,102.40	42%	\$1,219.39	NEW
WV-SW115	HD 720p Vandal-Resistant Wall Mount Network Camera	PANASONIC	\$1,123.88	42%	\$651.85	NEW
WV-U1130	FULLHD INDOOR BOX NETWORK CAMERA, H.265,	PANASONIC	\$520.82	42%	\$302.07	NEW
WV-U1130A	1080P INDOOR BOX CAMERA, H.265/H.264/MJPEG, 3.2MM FIXED LENS, 5 YEAR WARRANTY, VIDEO INSIGHT 7.8.5 OR HIGHER	PANASONIC	\$387.56	42%	\$224.78	NEW
WV-U1132	FullHD Indoor Box Network Camera, H.265, V/F lens	PANASONIC	\$817.01	42%	\$473.87	NEW
WV-U1132A	1080P INDOOR BOX CAMERA, H.265/H.264/MJPEG, 2.9-7.3MM 2.5X MOTORIZED ZOOM LENS, 5 YEAR WARRANTY, VIDEO INSIGHT 7.8.5 OR HIGHER	PANASONIC	\$645.90	42%	\$374.62	NEW
WV-U1142	4MP Indoor Box Network Camera, H.265, V/F lens	PANASONIC	\$1,284.30	42%	\$744.90	NEW
WV-U1142A	4MP INDOOR BOX CAMERA, H.265/H.264/MJPEG, 2.9-7.3MM 2.5X MOTORIZED ZOOM LENS, 5 YEAR WARRANTY, VIDEO INSIGHT 7.8.5 OR HIGHER	PANASONIC	\$775.07	42%	\$449.54	NEW
WV-U1532L	FullHD Outdoor Vandal Box Network Camera, H.265, V/F lens with IR-LED	PANASONIC	\$965.08	42%	\$559.75	NEW
WV-U1532LA	1080P OUTDOOR VANDAL RESISTANT BULLET CAMERA, H.265/H.264/MJPEG, 2.9-7.3MM 2.5X MOTORIZED ZOOM LENS, IR LED, IP66, IK10, 5 YEAR WARRANTY, VIDEO INSIGHT 7.8.5 OR HIGHER	PANASONIC	\$775.07	42%	\$449.54	NEW
WV-U1542L	4MP Outdoor Vandal Box Network Camera, H.265, V/F lens with IR-LED	PANASONIC	\$1,574.20	42%	\$913.04	NEW
WV-U1542LA	4MP OUTDOOR VANDAL RESISTANT BULLET CAMERA, H.265/H.264/MJPEG, 2.9-7.3MM 2.5X MOTORIZED ZOOM LENS, IR LED, IP66, IK10, 5 YEAR WARRANTY, VIDEO INSIGHT 7.8.5 OR HIGHER	PANASONIC	\$904.27	42%	\$524.48	NEW
WV-U2130L	FULLHD INDOOR DOME NETWORK CAMERA, H.265, WITH IR-LED	PANASONIC	\$387.56	42%	\$224.78	NEW
WV-U2130LA	1080P INDOOR DOME CAMERA, H.265/H.264/MJPEG, 3.2MM FIXED LENS, IR LED, 5 YEAR WARRANTY, VIDEO INSIGHT 7.8.5 OR HIGHER	PANASONIC	\$387.56	42%	\$224.78	NEW
WV-U2132L	FullHD Indoor Dome Network Camera, H.265, V/F lens with IR-LED	PANASONIC	\$645.90	42%	\$374.62	NEW
WV-U2140LA	4MP INDOOR DOME CAMERA, H.265/H.264/MJPEG, 3.2MM FIXED LENS, IR LED, 5 YEAR WARRANTY, VIDEO INSIGHT 7.8.5 OR HIGHER	PANASONIC	\$516.73	42%	\$299.70	NEW
WV-U2142LA	4MP INDOOR DOME CAMERA, H.265/H.264/MJPEG, 2.9-7.3MM 2.5X MOTORIZED ZOOM LENS, IR LED, 5 YEAR WARRANTY, VIDEO INSIGHT 7.8.5 OR	PANASONIC	\$775.07	42%	\$449.54	NEW



Certified Minority Woman Owned DBE, EDWOSB,
 WOSB, MN-TG/ED, CERT, MNUCP, Section 3
 23549 Cedar Creek Road * Pine City, MN 55063 *
 Phone: (612)900-4026 * Fax:(651)964-2371
 E-mail: CBloom@B2GSALESLLC.COM

PANASONIC



2023 CATALOG

Item	Description	BRAND	B2G SALES LIST PRICE as of 8/1/2023	CLIENT DISCOUNT	CLIENT PRICE EACH	
WV-U2530LA	1080P OUTDOOR VANDAL RESISTANT DOME CAMERA, H.265/H.264/MJPEG, 3.2MM FIXED LENS, IR LED, IP66, IK10, 5 YEAR WARRANTY, VIDEO INSIGHT 7.8.5	PANASONIC	\$516.73	42%	\$299.70	NEW
WV-U2532L	FullHD Outdoor Vandal Dome Network Camera, H.265, V/F lens with IR-LED	PANASONIC	\$1,085.41	42%	\$629.54	NEW
WV-U2532LA	1080P OUTDOOR VANDAL RESISTANT DOME CAMERA, H.265/H.264/MJPEG, 2.9-7.3MM 2.5X MOTORIZED ZOOM LENS, IR LED, IP66, IK10, 5 YEAR WARRANTY, VIDEO INSIGHT 7.8.5 OR HIGHER	PANASONIC	\$775.07	42%	\$449.54	NEW
WV-U2540L	4MP Outdoor Vandal Dome Network Camera, H.265, with IR-LED	PANASONIC	\$710.50	42%	\$412.09	NEW
WV-U2540LA	4MP OUTDOOR VANDAL RESISTANT DOME CAMERA, H.265/H.264/MJPEG, 3.2MM FIXED LENS, IR LED, IP66, IK10, 5 YEAR WARRANTY, VIDEO INSIGHT 7.8.5	PANASONIC	\$645.90	42%	\$374.62	NEW
WV-U2542LA	4MP OUTDOOR VANDAL RESISTANT DOME CAMERA, H.265/H.264/MJPEG, 2.9-7.3MM 2.5X MOTORIZED ZOOM LENS, IR LED, IP66, IK10, 5 YEAR WARRANTY, VIDEO INSIGHT 7.8.5 OR HIGHER	PANASONIC	\$904.27	42%	\$524.48	NEW
WV-X1551LN	5MP H.265 OUTDOOR FIXED BOX CAMERA WITH AI ENGINE W/IR, CLEARSIGHT	PANASONIC	\$2,176.90	42%	\$1,262.60	NEW
WV-X1571LN	4K H.265 OUTDOOR FIXED BOX CAMERA WITH AI ENGINE W/IR, CLEARSIGHT	PANASONIC	\$2,630.15	42%	\$1,525.49	NEW
WV-X2251L	5MP H.265 INDOOR VANDAL DOME CAMERA WITH AI ENGINE W/IR	PANASONIC	\$1,796.49	42%	\$1,041.97	NEW
WV-X2271L	4K H.265 INDOOR VANDAL DOME CAMERA WITH AI ENGINE W/IR	PANASONIC	\$2,280.69	42%	\$1,322.80	NEW
WV-X2551LN	5MP H.265 OUTDOOR VANDAL DOME CAMERA WITH AI ENGINE W/IR, CLEARSIGHT DOME	PANASONIC	\$2,176.90	42%	\$1,262.60	NEW
WV-X2571LN	4K H.265 OUTDOOR VANDAL DOME CAMERA WITH AI ENGINE W/IR, CLEARSIGHT DOME	PANASONIC	\$2,560.26	42%	\$1,484.95	NEW
WV-X4170	9MP 360 INDOOR DOME H.265	PANASONIC	\$1,485.01	42%	\$861.31	NEW
WV-X4172	12MP SENSOR INDOOR 360 DOME CAMERA, H.265/H.264/MJPEG, 1.4MM FISHEYE LENS, 2992X2992PIXEL UP TO 30FPS, 5 YEAR WARRANTY, VIDEO INSIGHT 7.8 OR HIGHER	PANASONIC	\$1,439.94	42%	\$835.16	NEW
WV-X4173	12MP SENSOR INDOOR 360 DOME CAMERA, H.265/H.264/MJPEG, 1.4MM FISHEYE LENS, 2992X2992PIXEL UP TO 30FPS, AUDIO IN/OUT, BUILT-IN MIC, 5 YEAR WARRANTY, VIDEO INSIGHT 7.8 OR HIGHER	PANASONIC	\$2,034.96	42%	\$1,180.28	NEW
WV-X4571LM	9MP 360 OUTDOOR VANDAL H.265 W/IR M12	PANASONIC	\$2,757.24	42%	\$1,599.20	NEW
WV-X4573L	12MP SENSOR OUTDOOR VANDAL RESISTANT 360 DOME CAMERA, H.265/H.264/MJPEG, 1.4MM FISHEYE LENS, 2992X2992PIXEL UP TO 30FPS, IR LED, IP66, IK10, AUDIO IN/OUT, 5 YEAR WARRANTY, VIDEO INSIGHT 7.8 OR HIGHER	PANASONIC	\$2,254.90	42%	\$1,307.84	NEW
WV-X4573LM	12MP SENSOR OUTDOOR VANDAL RESISTANT 360 DOME CAMERA, H.265/H.264/MJPEG, 1.4MM FISHEYE LENS, 2992X2992PIXEL UP TO 30FPS, IR LED, IP66, IK10, AUDIO IN/OUT, M12 CONNECTOR, 5 YEAR WARRANTY, VIDEO INSIGHT 7.8 OR HIGHER	PANASONIC	\$2,672.77	42%	\$1,550.21	NEW
WV-X6511N	720P H.265 Outdoor PTZ 40X Zoom	PANASONIC	\$5,423.07	42%	\$3,145.38	NEW
WV-X6531N	1080P H.265 Outdoor PTZ 40X Zoom	PANASONIC	\$6,004.49	42%	\$3,482.60	NEW
WV-X6533LN	FULLHD OUTDOOR VANDAL PTZ NETWORK CAMERA, H.265, WITH 40X LENS, CLEARSIGHT COATING DOME	PANASONIC	\$6,263.73	42%	\$3,632.96	NEW
WV-X8571N	4X4K(33MP) MULTI-SENSOR OUTDOOR VANDAL RESISTANCE CAMERA. H.265/H.264/MJPEG.4.6MM FIXED LENS. 3840X2160PIXEL UP TO 15FPS. IP66, IK10, CLEARSIGHT COATING. AUDIO IN/OUT,5 YEAR WARRANTY. VIDEO INSIGHT 7.8.2 OR HIGHER, WHITE COLOR	PANASONIC	\$5,293.32	42%	\$3,070.12	NEW



August 8, 2023

State of Minnesota
Department of Administration
Admin/State Procurement
112 Administration Building
50 Sherburne Avenue
St Paul, MN 55155
ATTN: Glen Carpenter, Acquisition Management Specialist

RE: i-PRO Partner Authorization

This letter serves as confirmation that B2G Sales LLC is an authorized reseller partner of i-PRO Americas Inc. and is approved to sell all i-PRO product lines, including public safety products, security products, and related accessories, installation, services, or associated peripheral products.

Partner Name: B2G Sales LLC
Address: 23549 Cedar Creek Road Pine City, MN 55063
i-PRO Products Authorized: All i-PRO product lines, including public safety solutions, security products, and related accessories, installation, services, or associated peripheral products.
Primary Contact: Claudia Bloom, President
Phone: (612) 900-4026
E-mail: cbloom@b2gsales.com
www.B2GSales.com

B2G Sales LLC is a certified reseller partner and services/installation provider in good standing with i-PRO Americas Inc.

Feel free to contact me should you require any further clarification.

Thank you,

A handwritten signature in black ink, appearing to read 'David Ovesny', written in a cursive style.

i-PRO Americas Inc.
Senior Manager, Contracts & Bids
direct 330-219-1758
David.Ovesny@us.i-pro.com

i-PRO
The Power of Truth

NEW

MANAGE YOUR DIGITAL EVIDENCE WITH i-PRO



i-PRO SECURE CITIES

i-PRO PUBLIC SAFETY AND INTELLIGENT SURVEILLANCE SOLUTIONS, WORKING TOGETHER FOR LAW ENFORCEMENT AND MUNICIPALITIES

The i-PRO Secure Cities program delivers the most comprehensive portfolio of industry leading technologies combined with highly experienced engineering, sales and support personnel who understand the demands and challenges municipalities face today. By seamlessly integrating our best-in-class law enforcement technologies, imaging solutions, video and access management platforms, and intelligent analytics, the i-PRO Secure Cities program greatly enhances security and municipality operations. And it offers the performance, reliability, cost-efficiency and personal privacy local government officials and citizens can trust.

The i-PRO Secure Cities program provides innovative solutions for:

- Law Enforcement Digital Evidence Capture and Management
- Municipal/Law Enforcement Surveillance and Security
- Traffic Monitoring
- Public Health and Safety Compliance
- Public Events and Venues
- Mass Transportation Hubs
- Schools and Universities

A COMPREHENSIVE SECURITY SOLUTION FOR A SAFER CITY

The i-PRO Secure Cities program is a comprehensive initiative designed to provide the best in technology, incentives, tools and ongoing support. Our technology experts can help public safety and local government officials navigate the entire process of implementing smart technologies for smart city applications – defining needs, setting budgets, and securing funding for system design, installation, implementation and support.

Here's what makes the i-PRO Secure Cities program different:

- One Partner
- Contracts and Grants
- Complete Solution
- Upgrade Program
- 60 Years Experience
- U.S.-Based Tech Support
- Training & Support
- Advanced Features

From our new body-worn camera with a 12H field-swappable battery and evidence management solutions for the new age of law enforcement, to our comprehensive offering of open-platform surveillance and security system solutions, the i-PRO Secure Cities program delivers the best in integrated systems technology and superior personalized support to keep municipalities running safer and smoother.



NEW i-PRO BODY-WORN CAMERA BWC4000 WITH DETACHABLE BATTERY



Built on i-PRO Americas Inc.'s tradition of video surveillance excellence for law enforcement, the new and improved i-PRO body-worn camera with a detachable battery keeps your officers on the street. Featuring a two-piece design, the BWC4000 is IP67 / MIL-STD-810H rated to provide officers with a more reliable way to capture video and audio evidence in nearly any condition.

i-PRO's BWC4000 records in 1080P / 720P and seamlessly integrates with i-PRO's Unified Digital Evidence™ management software. The BWC4000, in unison with i-PRO's in-car video systems and fixed-surveillance cameras, forms a unified evidence management platform that preserves the chain of custody.

KEY FEATURES

- NEW Detachable Battery
- NEW H.264 / H.265 Video Compression
- NEW MP4 Video File Format
- NEW LCD Menu for Tagging
- Rugged IP67 and MIL-STD-810H Architecture
- 1080p / 720p / 360p Resolution
- 16:9 & 4:3 Aspect Ratio
- 4 Microphones for Advanced Noise Reduction
- Compatible with ICV4000 In-Car Video System
- Built-in GPS, WLAN and Bluetooth LE

GENERAL

Model Number	i-PRO Body-Worn Camera WV-BWC4000
--------------	-----------------------------------

HARDWARE SPECS

Dimensions (H x W x D)	3.37 x 2.75 x 0.94 Inches / 86 x 70 x 24 mm
Weight	6.0 oz
Drop Test	6' Rating
Waterproof Rating	IP67 (IEC60529)
Field of View / Aspect Ratio	[16:9 Mode] Horizontal: 137 °** Vertical: 79 ° (Diagonal: 157°)** [4:3 Mode] Horizontal: 115 ° Vertical: 87 ° (Diagonal: 143°)**
Video Storage	128GB Internal SD, Media Lock on SD Storage Card
Image Stabilization	6-Axis Gyro, Selectable on Playback
Battery / Battery Life	Li-ion Detachable / 12 Hours Standard Runtime
Warranty	Main Unit: 3 Years, Battery: 1 Year
Operating Temperature	-20°C to +50°C [-4°F to +122°F]

VIDEO / CAMERA / AUDIO

Video Resolutions Available	[16:9] 1080P / 720P / 360P [4:3] 1200P / 960P / 480P
Video Format	MPEG-4 Part 14
Robustness	MIL-STD-810H Salt Fog, Vibration, Shock, Temperature
Frame Rate (FPS)	30 fps
Low Light Sensitivity	0.08lx Color
Microphones	4 with Advanced Noise Reduction
Audio Format	AAC
Pre-Record Video	Configurable up to 3 Minutes

ACCESSORIES / OPTIONS

WV-BWC4000	Body-Worn Camera
WV-BWC40D8	8 Bay Docking Station and Charger Only (Require IPS-BWC-AC100W)
IPS-BWC-CTB	Common Trigger Box + Power Cable (VPU MK3 Installations Only)
IPS-BWC-ETH-NOPOE	3' Ethernet NoPoE for VPU MK3 /CTB Installations Only
IPS-BWC-ETH-NOPOEX	25' Ethernet NoPoE for VPU MK3 /CTB Installations Only
WV-BWC40D1A	Single Dock Vehicle or In-Station (Requires 12V Harness or AC)
IPS-BWC4-12V-WIRE	12V Wiring Harness for Single Dock or Single Charge in Vehicle
IPS-ICV-ETH25GRN	25' Ethernet for Single Dock in Vehicle
WV-BWC40C1A	Single Battery Charger Only (Requires 12V Harness or AC)
WV-BWC40C8	8-Bay Battery Charger Only (Require IPS-BWC-AC100W)
WV-BWC40B1	BWC4000 Spare Battery
IPS-BWC4-MNT-KIT	BWC4000 Mount Kit
IPS-BWC-AC100W	110W AC Adapter for 8-Bay Dock and 8-Bay Charger
IPS-BWC-AC65W	65W AC Adapter for Single Dock and Single Charger
IPS-BWC-8DOCWALL	Wall Mount for 8-Bay Docking Station
IPS-BWC-8CHGWALL	Wall Mount for 8-Bay Battery Charger
IPS-BTS-SENSOR	Holster Sensor for BWC Record Triggering

RUGGED IP67 AND MIL-STD-810H ARCHITECTURE

i-PRO's body-worn camera features rugged-built quality with an IP67 rating and MIL-STD-810H architecture, so the evidence capture continues uninterrupted, even in the most challenging outdoor environments, and it utilizes the versatile Klick Fast™ mounting system.

VIDEO/RESOLUTIONS AVAILABLE [16:9] 1080P / 720P / 360P [4:3] 1200P / 960P / 480P

Recording evidence in 1080p, 720p and 360p, the i-PRO BWC4000 provides crystal-clear video that accelerates convictions in court.

HANDS-FREE RECORDING ACTIVATION

i-PRO's BWC4000 is activated via wireless LAN or Bluetooth from a variety of triggers. Options include light bar, siren, G-force sensor, among others. Integration with the ICV4000 in-car system allows the recording to start simultaneously on the vehicle and body-worn systems.

ADDITIONAL FEATURES

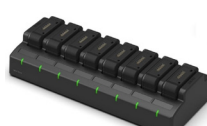
- One Touch Record
- LCD Screen
- Time/Date Stamp
- File Tagging Menu
- Media Password Protection / 256AES
- Recharge Time 4 Hours
- GPS Location Tagging and Time Sync
- Wireless LAN IEEE 802.11 a/b/g/n/ac
- Embedded Bluetooth LE V4.1
- In-Car Video Integration
- FIPS 140-2 Security Standard
- Docking Station Single/8 Bay



WV-BWC40D1A



WV-BWC40D8



WV-BWC40C8



WV-BWC40C1A



WV-BWC40B1



IPS-BWC-CTB

NEW i-PRO ICV4000 FHD & VC35(AS-1) FRONT CAMERA



ICV4000 360° FHD

The new i-PRO Americas Inc. ICV4000 360° FHD in-car digital video recording system offers industry-leading image quality for unmatched critical mobile video evidence capture. The WV-VC35 Full HD 1080p front camera delivers amazing clarity and color reproduction even in low light. The ICV4000 system supports up to four additional HD cameras, for complete 360 degree situational awareness.

- Full HD 1080p high-quality video evidence capture
- Unparalleled 360 degree recording and viewing
- Supports up to two 512GB solid state drives with 256AES encryption
- Full integration with the BWC4000 Body Worn Camera, with field swappable battery
- Compatible WV-VC35 front camera offers full color in extreme low-light conditions, with
- Compatible WV-VC35 front camera offers industry-leading, high resolution, 86 degree wide-angle FOV
- Available wireless microphone transmits quality audio up to one mile
- Compatible with Unified Digital Evidence (UDE) On-Premise and ClouDE Hosted DEMS

KEY FEATURES

- NEW** Improved Hi-Speed Video Processor
- NEW** MP4 Video File Format
- NEW** Built-in GPS, Dual 802.11ac Wi-Fi Support, and Bluetooth 4.2LE
- NEW** Dual SSD Capability Up to 1TB with 256 AES Encryption
- Tested to MIL-STD-810H Standards
- 1080p / 720p / 360p Configurable Resolution
- Compatible with i-PRO Public Safety VC30, VC31, VC32, VC35, and VCF41P Cameras
- Record up to five High-resolution Cameras at the Same Time

GENERAL

Model Number	WJ-VPU4000
VIDEO RECORDER SPECIFICATIONS	
Dimensions (W x H x D)	7.0" (W) x 3.44" (H) x 6.1" (D)
Weight	4.0 lbs
Durability	Rugged Design to Withstand Extreme Heat and Vibration MIL-STD-810H, UL62368
Operating Temperature	-10°C to +50°C {14°F to +122°F}
Operating Humidity	10% to 80% (Non-Condensing)
Video Storage	256GB / 512GB SSD i-PRO Only, 2 Bays Removable / Lockable, Up to 1TB
Media Encryption	256 AES
Video File Format	MP4
Video Compression	H.264
Audio	3 Input Channels RCA Connectors, Using AAC
Power Input	12VDC Operating Range 10.0-16.0VDC
Power Consumption	12VDC (Max w/5 Cameras) 56.4W
Interface	5-100Mbps Ethernet, 2-1Gbps Ethernet, 1-100Mbps BWC Dock Radar-RS232C, Analog Audio-In-Car Mic, 2x-Analog for Wireless Microphone
Wireless	802.11a/b/g/n/ac 2x Modules 2x Antennas each, 2.4GHz/5GHz
Bluetooth	Bluetooth 4.2 LE
GPS	Built-in, SMA Connector
GPIO	16 Inputs, 4 Outputs
Impact Sensor	Built-in WV-VC35 Front Camera, Configurable Sensitivity
Mounting Bracket	Bracket Included for Trunk / Console Mounting
Antenna	Accessory - 6 Lead Shark Fin, 4x-2.4/5GHz, 1x-BT, 1x-GPS
Battery Backup Unit	Included - 50W Capacity Automatic Switching / Configurable Shutdown
Warranty	Main Unit: 3 Years, Battery Backup Unit: 1 Year

ACCESSORIES / OPTIONS

WJ-VPU4000	VPU4000 Recording Unit Only
IPS-ICV4-ACC	VPU4000 Accessory/Cable Kit - Includes: <ul style="list-style-type: none"> ■ 256SSD w/256 AES Encryption ■ Power Distribution Box & Cables ■ Battery Backup Unit ■ 3 Ethernet 25' Cables (Black, Yellow, Blue)
IPS-ICV4-256SSD	256GB SSD w/256 AES Encryption
IPS-ICV4-512SSD	512GB SSD w/256 AES Encryption
IPS-ICV4-ANT-BL	Antenna Shark Fin 6-in-1 Antenna, Bolt-On, Black
IPS-ICV4-ANT-WH	Antenna Shark Fin 6-in-1 Antenna, Bolt-On, White
WV-VC35	Front Compact Wide Angle Camera
WV-VC32	Side/Rear Camera (Also Order Side Cable ARB-CABLSIDE)
WV-VC31	Back Seat Camera with Infrared
WV-VC30	Front 30x Zoom Camera
ARB-M90	Wireless Mic Transmitter/Receiver/Desktop Charger Kit 900MHz
ARB-M24	Wireless Mic Transmitter/Receiver/Desktop Charger Kit 2.4GHz



Front Camera

Video Processing Unit

Rear Seat Camera

Side View Camera

FRONT CAMERA (WV-VC35)

FEATURES

Resolution: Imaging Mode: 16:9

H.264 1920 x 1080 / 1280 x 720 / 640 x 360 / 320 x 180, 30fps

Zoom Range: 1x Optical; 3x Digital

Image Sensor: 1/3 CMOS

Low-light Capability:

Color: 0.03 lx (0.0028 footcandle) (F2.2, AGC: On [High])

B/W: 0.02 lx (0.0019 footcandle) (F2.2, AGC: On [High])

Angular Field of View: Horizontal: 86° Vertical: 46°

Auto Adjustments: Focus, White Balance

Day/Night: On / Off/Auto

AGC: On (Low) / On (Mid) / On (High) / Off

Weight: .43 lbs.

Dimensions: 4.5" (W) x 1.77" (H) x 1.45" (D) (Excluding Mount)

File Format / Compression: MP4, H.264 / H.265

G-Force Impact Sensor: Internal Built-In

CONTROLS (HARDWARE BASED)

Record: Front and Rear Record Indication Mode Button to Optimize for Lighting

CONTROLS (SOFTWARE BASED)

Manual Zoom

Auto Focus

Record (Front and Rear Record Indication on Hardware)

BACK SEAT CAMERA (WV-VC31)

FEATURES

Resolution: Imaging Mode: 16:9

H.264 1280 x 720 / 640 x 360 / 320 x 180, 30fps (Max)

Image Sensor: 1/4 MOS

Low-light Capability: B/W: 0.0 lx (When the IR-LED is Lit)

Infrared: Auto

Angular Field of View: Horizontal: 150°, Vertical: 93°

Auto Adjustments: White Balance

Day/Night: Auto

AGC: Auto

Wide Dynamic Range: Auto

Weight: 0.79 lb

Dimensions: .3.94" (W) x 1.69" (H) x 1.85" (D)

(Excluding Mount and Projecting Parts)

SIDE/REAR VIEW CAMERA (WV-VC32)

FEATURES

Resolution: Imaging mode: 16:9

H.264 1280 x 720 / 640 x 360 / 320 x 180, 30fps (Max)

Image Sensor: 1/4 MOS

Low-light Capability: Color: 1.5 lx | B/W: 1.0 lx

Angular Field of View: Horizontal: 150°, Vertical: 93°

Auto Adjustments: White Balance

Day/Night: Auto

AGC: Auto

Wide Dynamic Range: Auto

Weight: 0.62 lb

Dimensions: .3.94" (W) x 1.69" (H) x 1.85" (D)

(Excluding Mount and Projecting Parts)

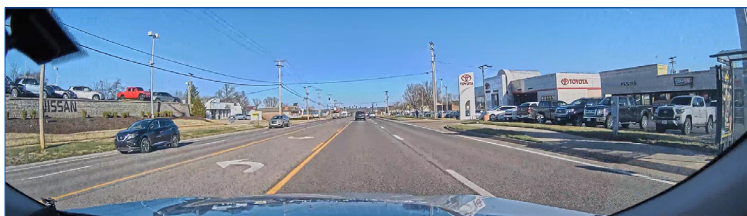
NEW i-PRO WV-VCF41P 4K SENSOR PANORAMIC FRONT CAMERA



WV-VCF41P PANORAMIC FRONT CAMERA

The new i-PRO WV-VCF41P 4K Sensor Panoramic Front Camera harnesses the power of the advanced Ambarella AI vision processor for AI edge applications.

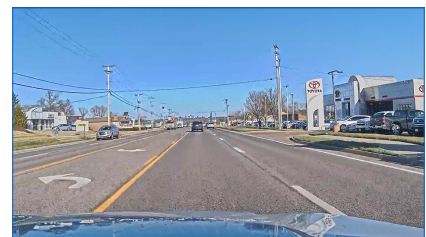
i-PRO reduces your storage requirements by focusing on the view you need in front of the vehicle. This extremely wide panoramic view captures high resolution video evidence that other cameras miss.



WV-VCF41P (150° Field of View 32:9)

KEY FEATURES

- NEW** Panoramic 150° field of view for full windshield coverage
- NEW** 4K image sensor for Ultra HD image quality
- NEW** Enhanced lens and video processing for minimal edge distortion
- NEW** License plate readability maintained within a majority of the horizontal region
- NEW** Single button for Record/Stop with recording light indicator



WV-VC35 (86° Field of View 16:9)

GENERAL

Model Number:	WV-VCF41P
Resolution:	Main Stream: 3840 x 1080p Bitrate: 14336, 10240, 8192 kbps 2560 x 720p Bitrate: 8192, 6144, 4096 kbps Live Stream: 1280 x 360p Bitrate: 4096, 2048, 1024, 768, 512, 256, 128 kbps 640 x 180p Bitrate: 4096, 2048, 1024, 768, 512, 256, 128 kbps
Pixels:	Approximately 8.4M effective pixels across the entire image sensor before trimming edges
Video CODEC:	H.264 / H.265 Ready
SoC:	Ambarella CV22
Scanning System:	Progressive
Zoom Ratio:	1x Optical; 3x Digital (x1, x1.5, x2, x3)
Focal Length:	3.1mm (1/8 inches)
Aperture:	1:1.8
Aperture Range:	F1.8 Fixed
Focus Range:	1.5m (59 inches) - ∞
Image Sensor:	1/1.8 CMOS Image Sensor
Aspect Ratio:	32:9
Field of View:	Horizontal: 150° Vertical: 40°
Low-light Capability:	Color: 0.16lx (0.0149 footcandle) (F1.8, AGC:On(High)) Monochrome: 0.12 lx (0.0112 footcandle) (F1.8, AGC: On(High))
Picture Mode:	SuperD, Night, Off
Gain (AGC):	On Low/Mid/High, Off
G-Force Sensor:	Internal Off, On (10 levels)
Auto Adjustments:	Auto White Balance
Focus:	Fixed
Day/Night:	On / Off / Auto
Buttons:	Single Record/Stop
LED Indicators:	Front and Rear to indicate recording (configurable)
Power Source:	PoE (IEEE802.3af compliant) via RJ45 connector
Power Consumption:	PoE DC 48V 180mA/Approx. 8.6W (Class 0 Device)
Operating Environment:	Temperature: -10°C to 50°C, 14°F to 122°F Humidity: 10% to 90% (no condensation)
Weight:	.52 lbs. (235g)
Dimensions:	4.60" (W) x 1.85" (H) x 1.18" (D)
Mounting Bracket:	Visor Plate, pivoting arm included
Compatibility:	WJ-VPU4000, UDE and CloUDE
Laptop Playback Requirements:	CPU: Intel®Core™ i5-7300U CPU @ 2.60GHz or faster. RAM: 16.00GB or more



NEW i-PRO BWC4000 HOLSTER TRIGGERING SENSOR



i-PRO Americas Inc. introduces the new BWC4000 holster triggering sensor. This new sensor ensures your BWC4000 will start recording instantly when your weapon is removed from your holster to capture every incident video. The BWC4000 holster triggering sensor uses a cryptographic key exchange over a secure Bluetooth channel, making it much more secure and reliable than other beacon technology. Plus, a rechargeable internal battery ensures you will never have to deal with a complicated battery installation, and the holster triggering sensor is automatic, which eliminates the use of buttons and switches.

GENERAL

Model Number	IPS-BTS-SENSOR
--------------	----------------

HOLSTER SENSOR SPECIFICATIONS

Dimensions (L x W x H)	2.35" (L) x 0.85" (W) x 0.57" (H)
Weight	10 Grams
Durability	Waterproof IP67
Operating Temperature	-10°C to +60°C {14°F to + 140°F}
Battery	Internal Rechargeable 62mAh
Charging	USB Micro Cable Supplied, Full Charge in 8 Hours
Mounting	3M VHB Tape w/3M Activator
Indicators	LED: Charging - Red, Fully Charged - Green
Warranty	1 Year

COMPATIBLE WITH

- WV-BWC4000: i-PRO Body-Worn Camera
- Firearms and Conductive Energy Weapons (CEWs)

KEY FEATURES

Holster trigger can instantly start BWC4000 recording

Simple installation and operation to existing lethal weapon holsters

Rechargeable battery lasts up to four weeks without interruption and only needs charging every three weeks

Simple one-time Bluetooth pairing process

BWC automatically re-pairs with sensors when in range



Sensor installed on holster



CLOUD-HOSTED MANAGEMENT FOR YOUR DIGITAL EVIDENCE

i-PRO Americas Inc. introduces CloUDE powered by Genetec!

i-PRO, a global leader in advanced sensing technologies, and Genetec, the leader in video management, have come together to provide an open platform solution that offers you the choice between on-premises or cloud-hosted management for your digital evidence. i-PRO's CloUDE powered by Genetec is a digital evidence management system that facilitates collaboration between agencies, corporate departments, lawyers and the public. Grant immediate access to evidence and ensure that the information is only shared with authorized individuals.

Compatible with i-PRO's BWC MK3, BWC4000, Arbitrator360-HD, and ICV4000, i-PRO's CloUDE powered by Genetec gives you the ability to choose based on your needs and budgets, and you retain complete ownership of all your evidence and metadata.

KEY FEATURES

Centralize Digital Files in One App

Built-in Video Redaction

Video Conversion and Review

Upload Files from the Public

Maintain Chain of Evidence

Video Request Workflows

Powered by
Genetec



ON-PREMISE MANAGEMENT FOR YOUR DIGITAL EVIDENCE

i-PRO now offers you the choice between on-premise or cloud-hosted management for your digital evidence. i-PRO's UDE On Premise allows you to manage and store all of your digital evidence data at your facility. You choose the hardware and installation setup that fits your needs. All evidence files are encrypted and hashed, ensuring their security and integrity from capture to court to archiving. With i-PRO's UDE On Premise, you are in control of your data security policies, and you can access the information without logging in to an external cloud-hosted or storage environment.

i-PRO gives you the ability to deploy the best digital evidence management system based on your specific needs and budget, and you retain complete ownership of all your evidence and metadata.



i-PRO Americas Inc.

FOR TECHNICAL SUPPORT

support.h@i-pro.com
1.800.513.5417
M-F 7:00am – 7:00pm CST

**FOR MORE INFORMATION,
CONTACT US**

i-pro.com/us/en/publicsafety
i-PROPublicSafety@i-pro.com
1.877.803.8492